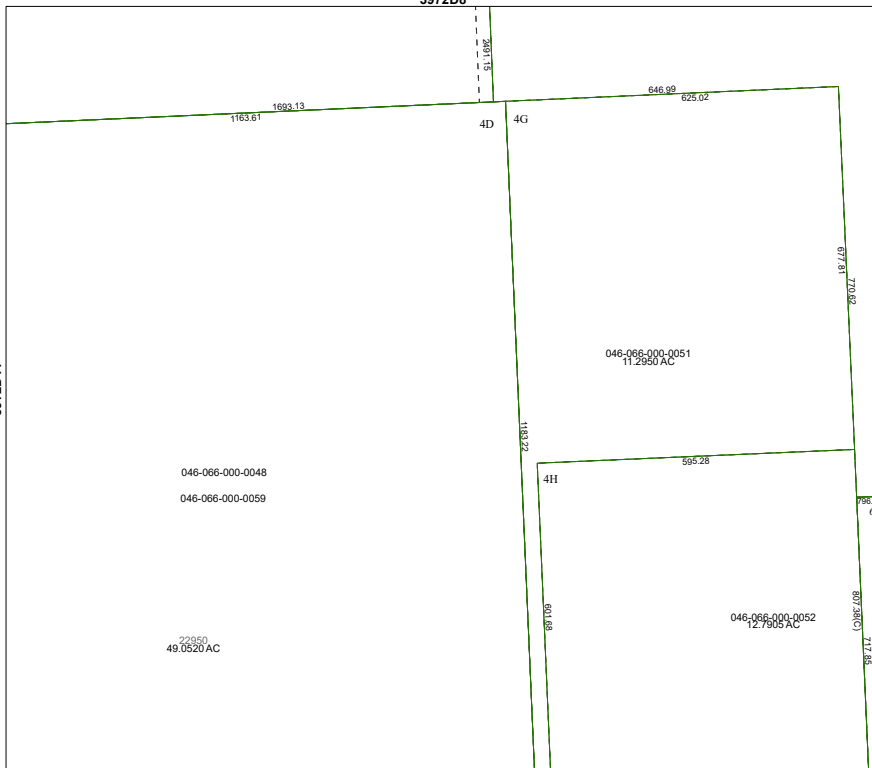


3972D8

3972D11



3971B4

# Harris Central Appraisal District



0 45 90 180  
Feet

PUBLICATION DATE:  
5/21/2024

Geospatial or map data maintained by the Harris Central Appraisal District is for informational purposes and may not have been prepared for or be suitable for legal, engineering, or surveying purposes. It does **not** represent an on-the-ground survey and only represents the approximate location of property boundaries.

## MAP LOCATION



# FACET

3972D12

6	7	8	9	6
10	11	12	9	10
2	3	4	1	2