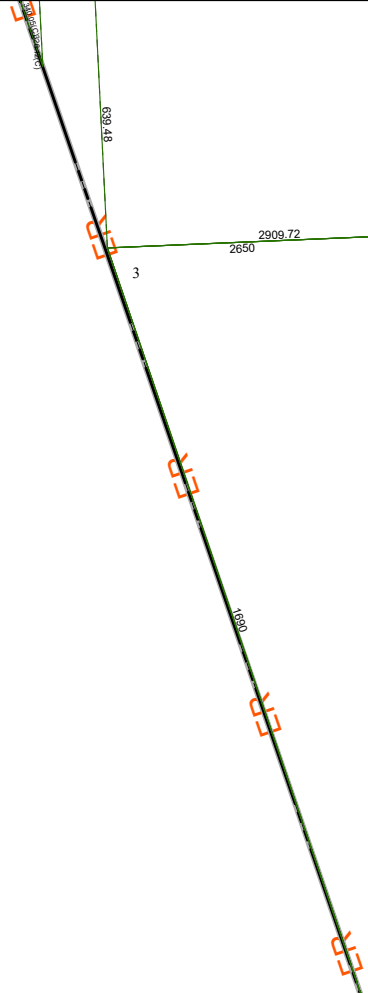


3973A8

3973A11



Harris Central Appraisal District



0 45 90 180
Feet

PUBLICATION DATE:
1/5/2023

Geospatial or map data maintained by the Harris Central Appraisal District is for informational purposes and may **not** have been prepared for or be suitable for legal, engineering, or surveying purposes. It does **not** represent an on-the-ground survey and only represents the approximate location of property boundaries.



MAP LOCATION



FACET 3973A12

6	7	8	5	6
10	11	12	9	10
2	3	4	1	2

3973C4