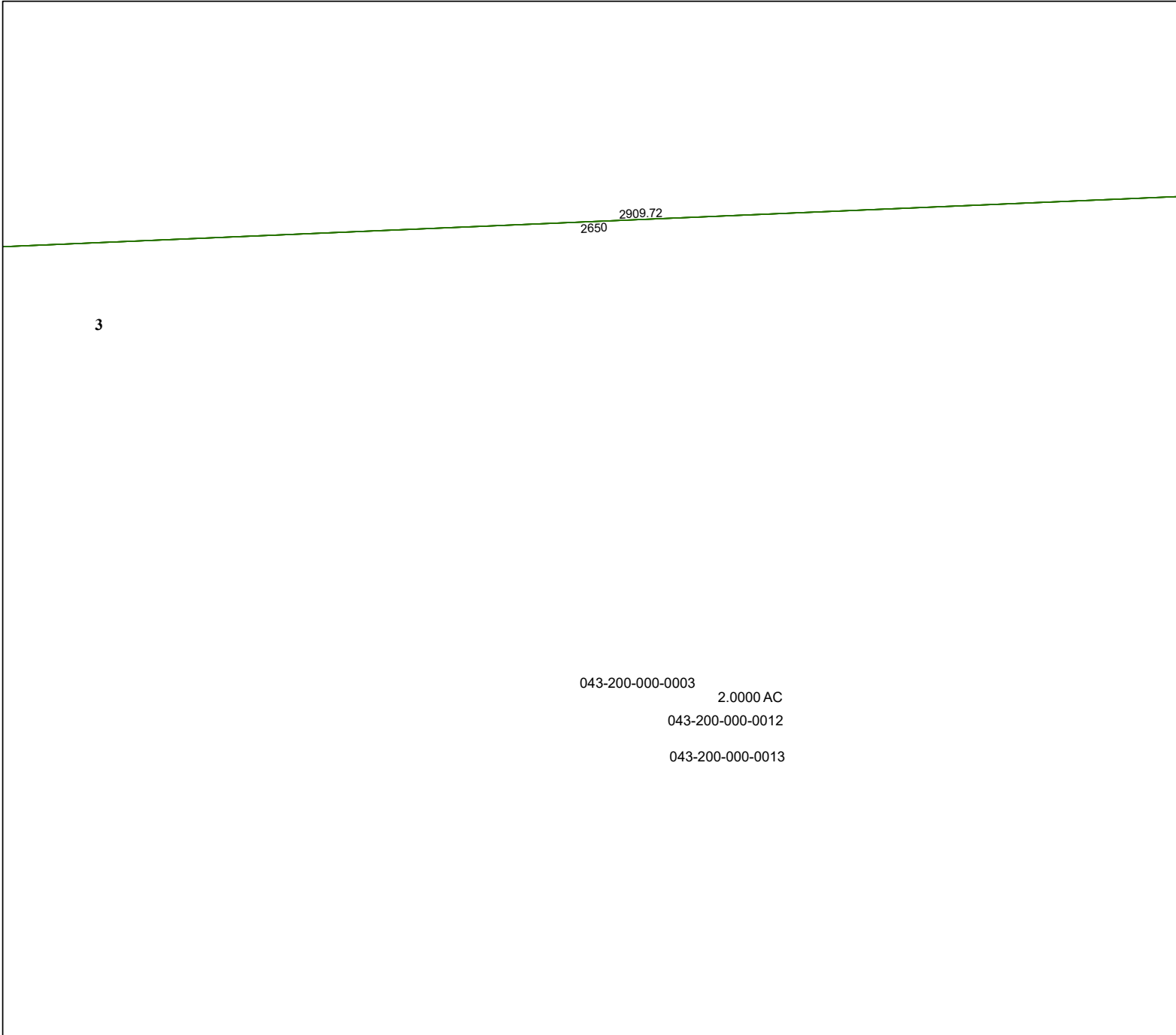


3973B5

3973A12



3973D1

# Harris Central Appraisal District



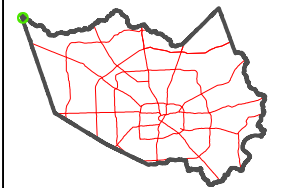
0 45 90 180  
 Feet

PUBLICATION DATE:  
 1/5/2023

Geospatial or map data maintained by the Harris Central Appraisal District is for informational purposes and may **not** have been prepared for or be suitable for legal, engineering, or surveying purposes. It does **not** represent an on-the-ground survey and only represents the approximate location of property boundaries.



### MAP LOCATION



## FACET

### 3973B9

7	8	5	6	7
11	12	9	10	11
3	4	1	2	3

3973B10