

3973B9

Harris Central Appraisal District



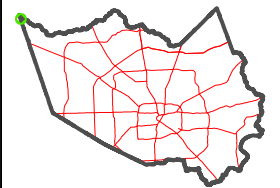
0 45 90 180 Feet

PUBLICATION DATE:
1/5/2023

Geospatial or map data maintained by the Harris Central Appraisal District is for informational purposes and may **not** have been prepared for or be suitable for legal, engineering, or surveying purposes. It does **not** represent an on-the-ground survey and only represents the approximate location of property boundaries.



MAP LOCATION



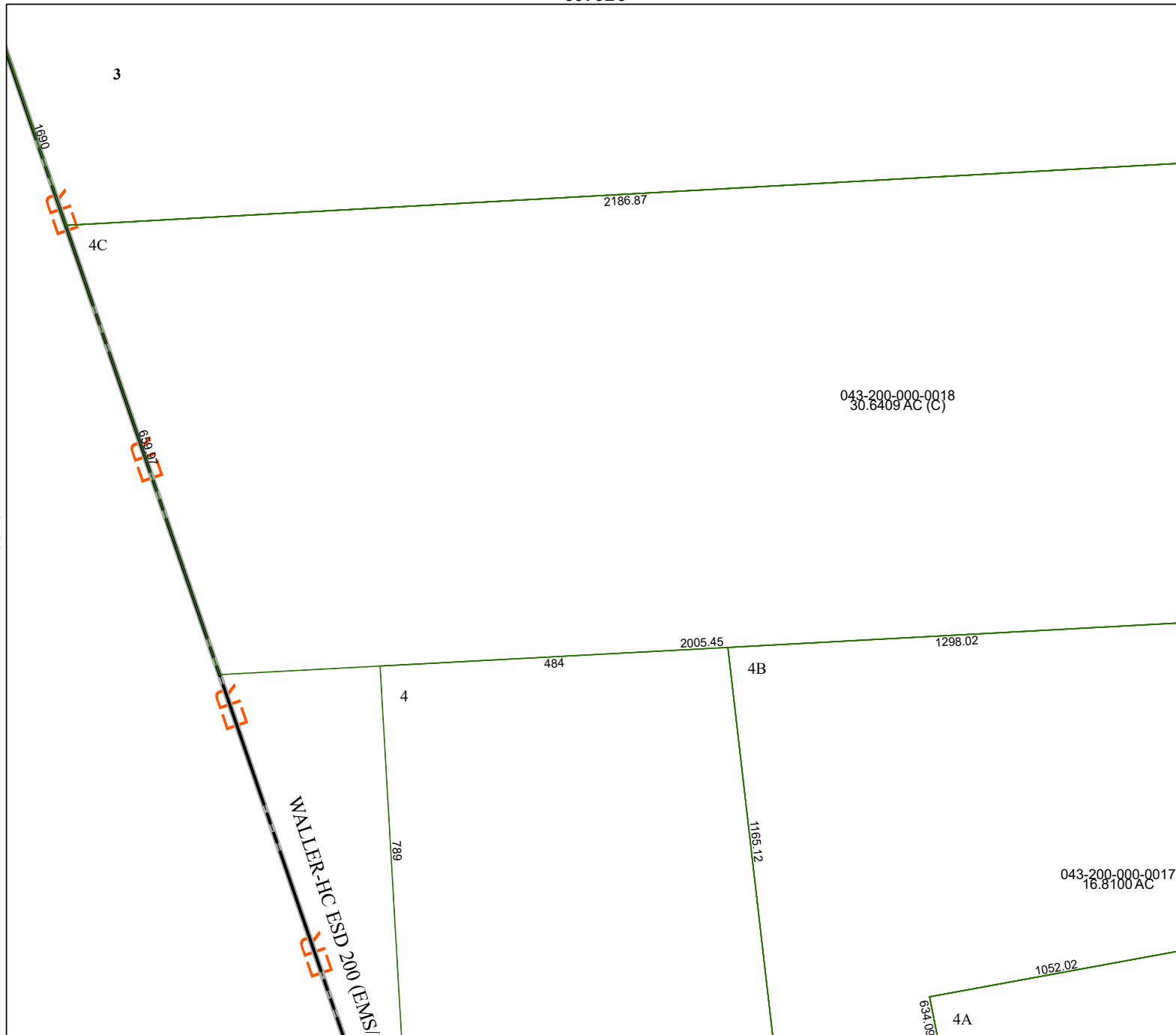
FACET 3973D1

11	12	9	10	11
3	4	1	2	3
7	8	5	6	7

3973D5

3973C4

3973D2



043-200-000-0018
30.6409 AC (C)

043-200-000-0017
16.8100 AC