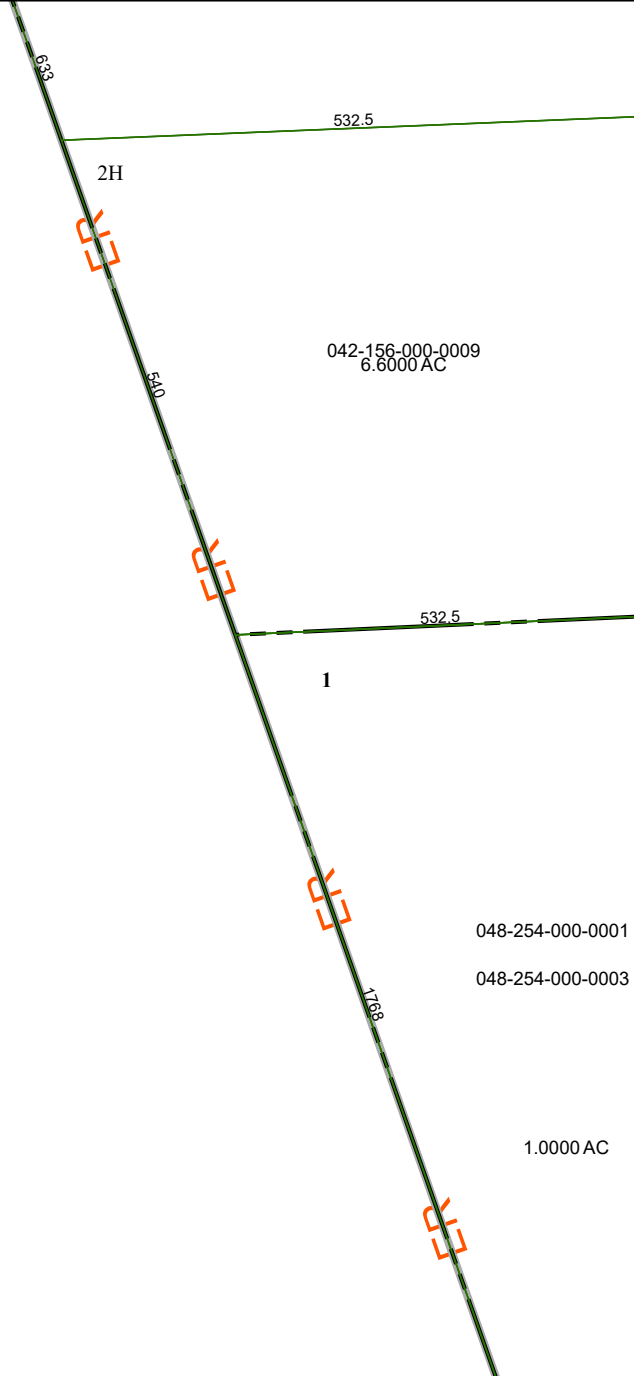


4068D6

4068D9

4067B2



Harris Central Appraisal District



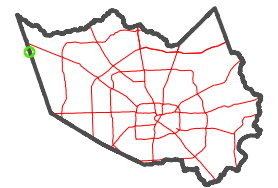
0 45 90 180 Feet

PUBLICATION DATE:
12/30/2023

Geospatial or map data maintained by the Harris Central Appraisal District is for informational purposes and may **not** have been prepared for or be suitable for legal, engineering, or surveying purposes. It does **not** represent an on-the-ground survey and only represents the approximate location of property boundaries.



MAP LOCATION



FACET 4068D10

5	6	7	8
9	10	11	12
1	2	3	4

4068D11

048-254-000-0001

048-254-000-0003

1.0000 AC

042-156-000-0009
6.6000 AC

2H

1