

4068B12

# Harris Central Appraisal District



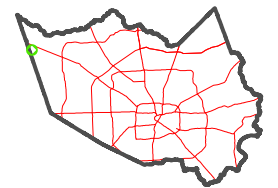
0 45 90 180  
Feet

PUBLICATION DATE:  
4/8/2024

Geospatial or map data maintained by the Harris Central Appraisal District is for informational purposes and may **not** have been prepared for or be suitable for legal, engineering, or surveying purposes. It does **not** represent an on-the-ground survey and only represents the approximate location of property boundaries.



### MAP LOCATION



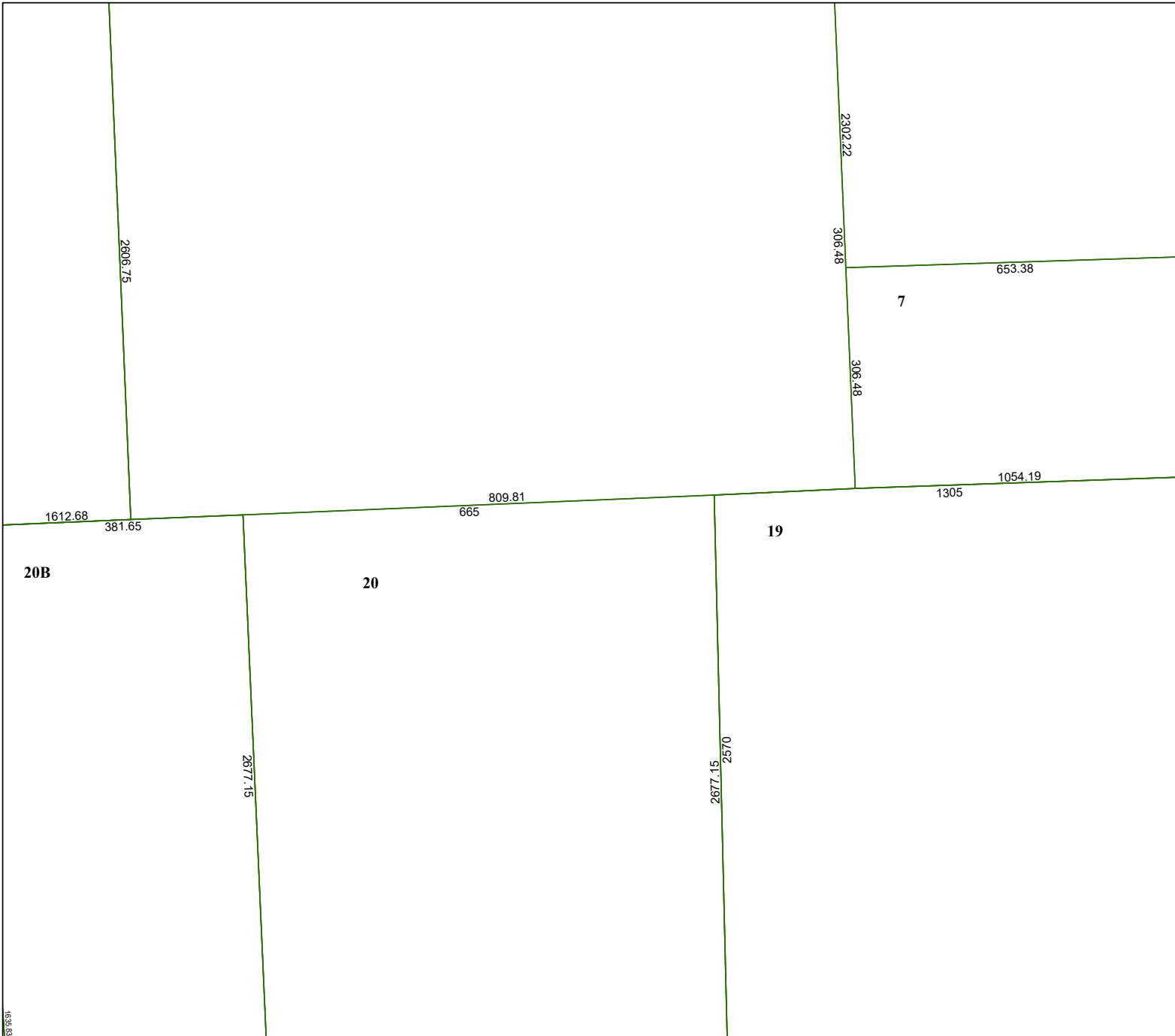
## FACET 4068D4

10	11	12	9	10
2	3	4	1	2
6	7	8	5	6

4068D8

4068D3

4168C1



1658.83