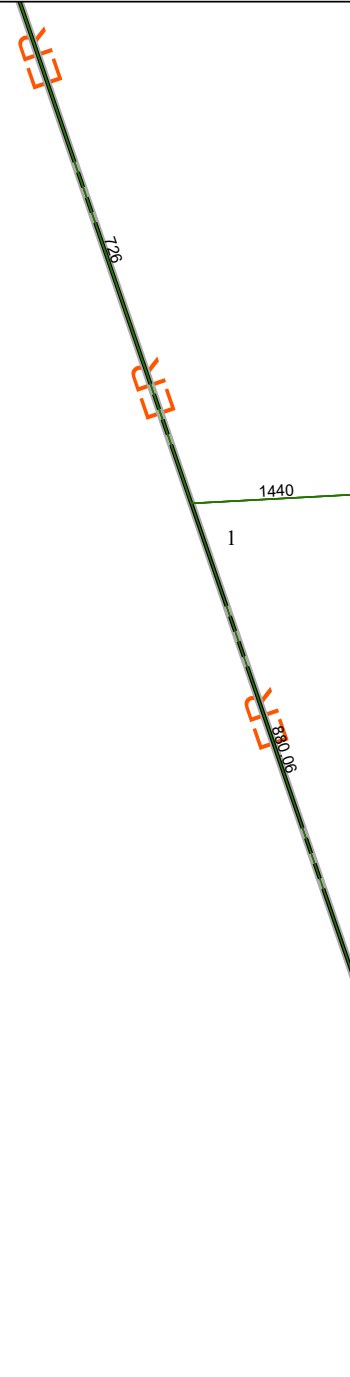


4070A1

3970B8



# Harris Central Appraisal District



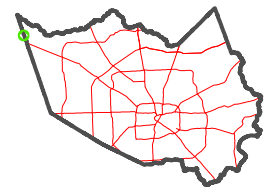
0 45 90 180 Feet

PUBLICATION DATE:  
3/25/2024

Geospatial or map data maintained by the Harris Central Appraisal District is for informational purposes and may **not** have been prepared for or be suitable for legal, engineering, or surveying purposes. It does **not** represent an on-the-ground survey and only represents the approximate location of property boundaries.



## MAP LOCATION



## FACET 4070A5

	1	2	3
	5	6	7
	9	10	11

4070A9