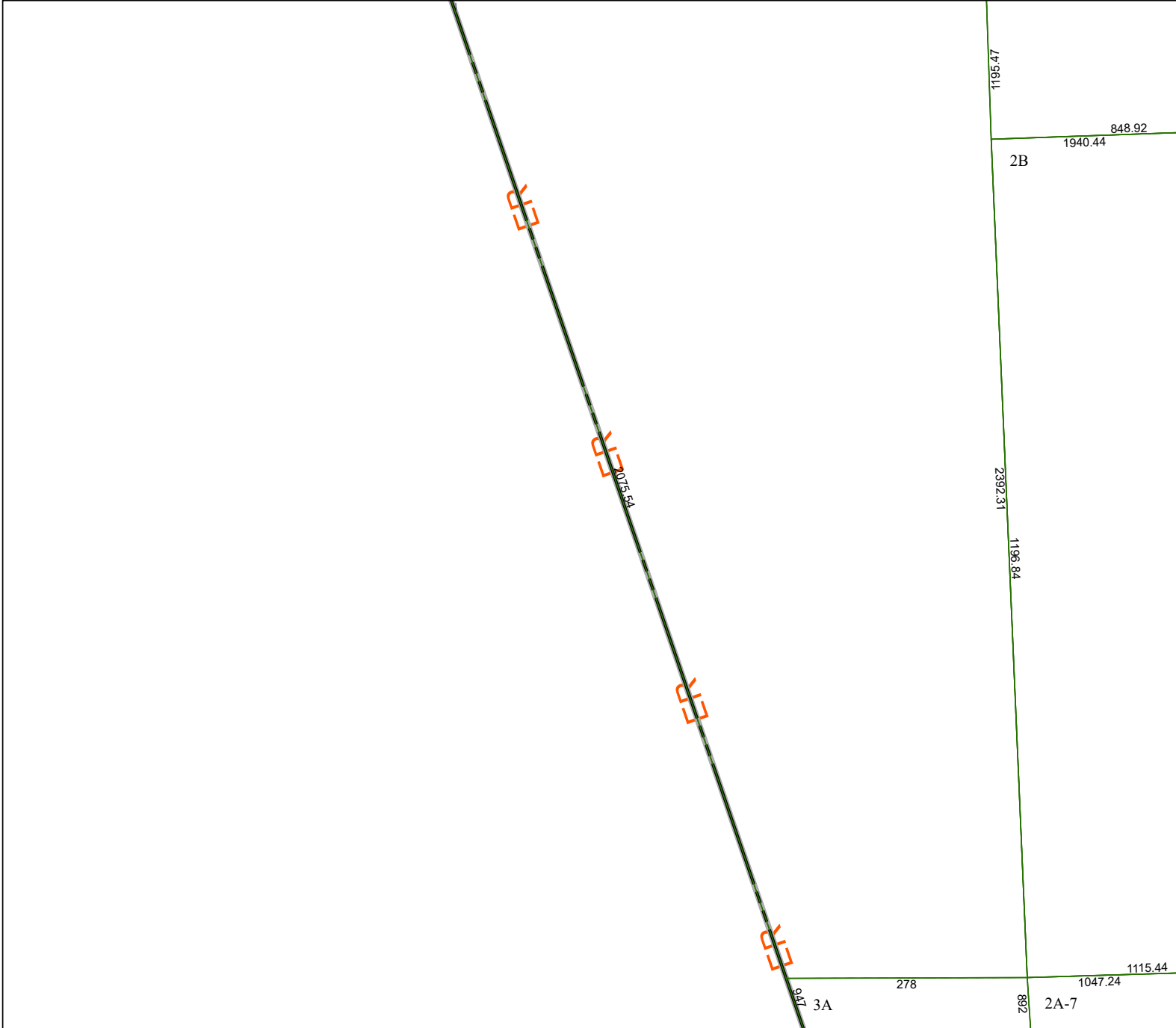


4070A10

4070C1



Harris Central Appraisal District



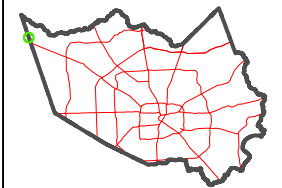
0 45 90 180 Feet

PUBLICATION DATE:
1/5/2023

Geospatial or map data maintained by the Harris Central Appraisal District is for informational purposes and may **not** have been prepared for or be suitable for legal, engineering, or surveying purposes. It does **not** represent an on-the-ground survey and only represents the approximate location of property boundaries.



MAP LOCATION



FACET 4070C2

9	10	11	12
1	2	3	4
5	6	7	8

4070C6

4070C3