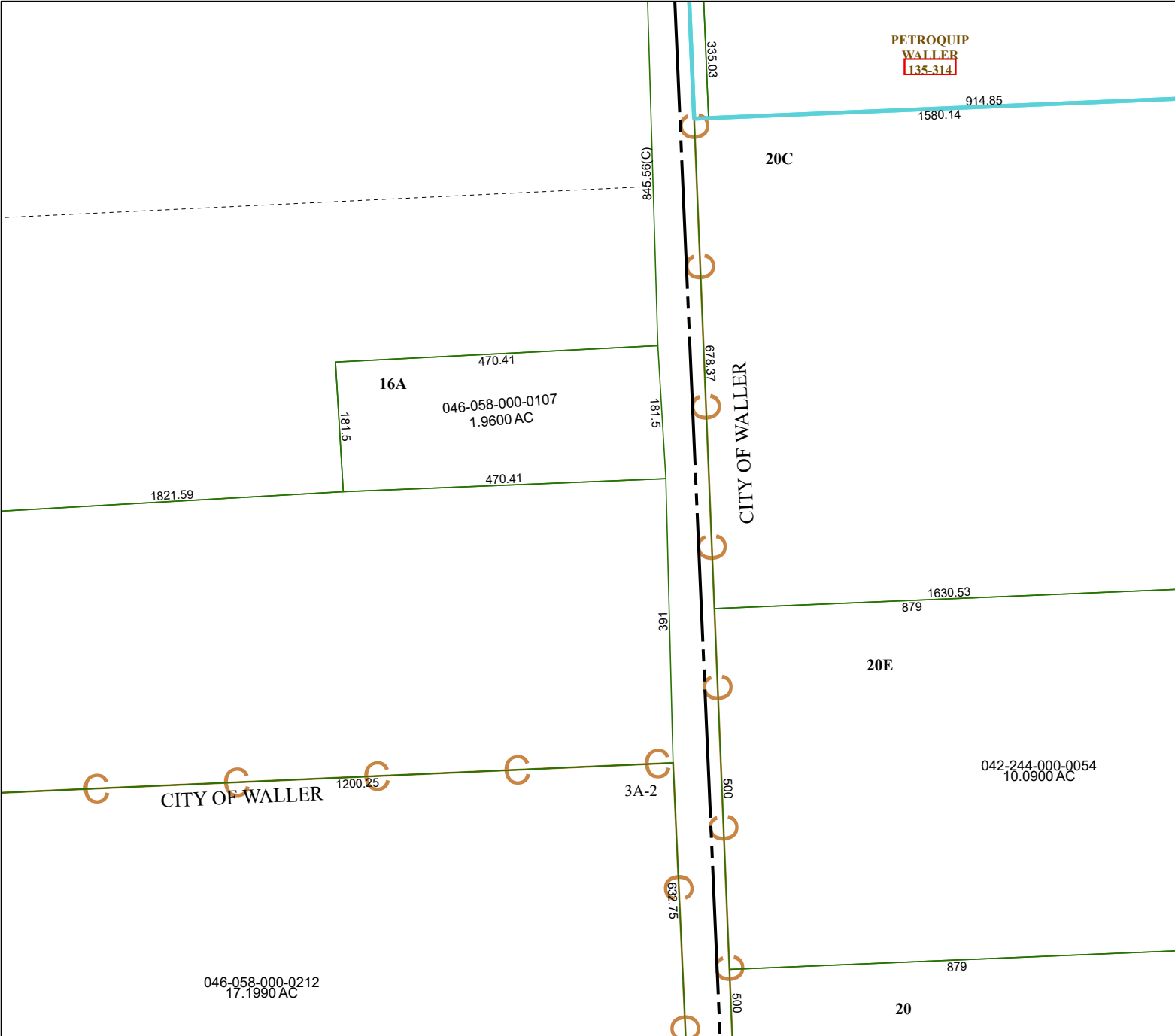


4070D6

4070D9

4069B2



PETROQUIP
WALLER
135-314

Harris Central Appraisal District



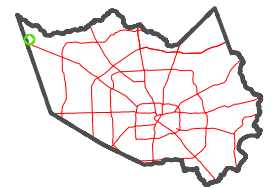
0 45 90 180 Feet

PUBLICATION DATE:
1/9/2025

Geospatial or map data maintained by the Harris Central Appraisal District is for informational purposes and may **not** have been prepared for or be suitable for legal, engineering, or surveying purposes. It does **not** represent an on-the-ground survey and only represents the approximate location of property boundaries.



MAP LOCATION



FACET 4070D10

8	5	6	7	8
12	9	10	11	12
4	1	2	3	4