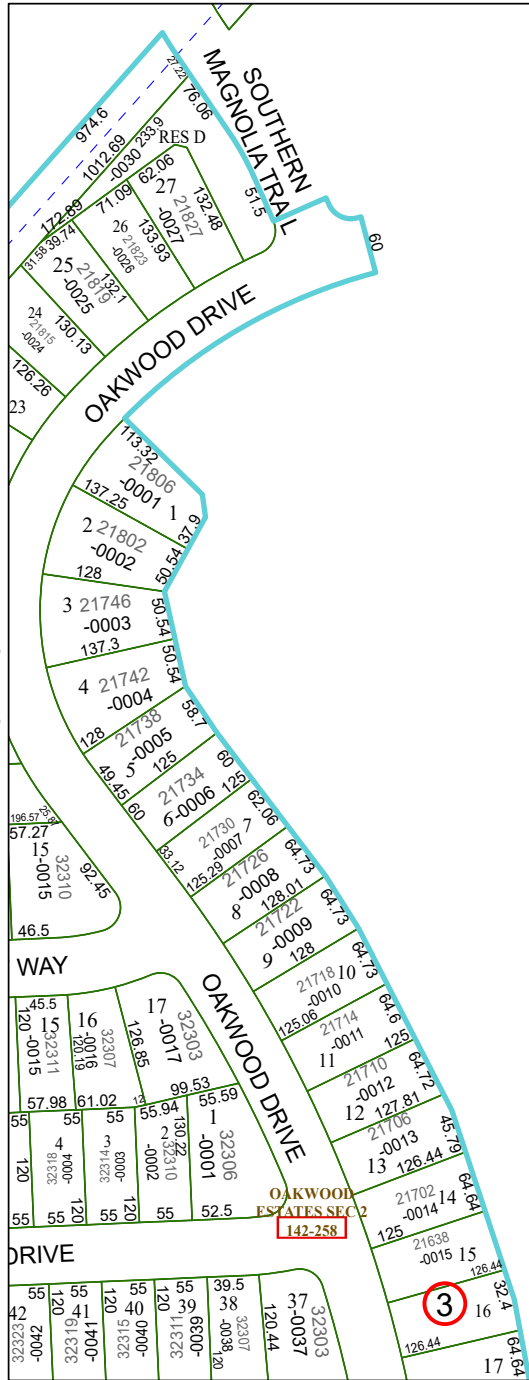


4071C7



045-027-000-0055
88.3035 AC

4070A3

Harris Central Appraisal District

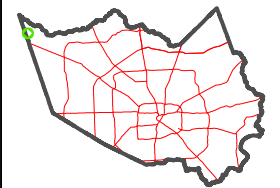


0 45 90 180 Feet

PUBLICATION DATE:
1/9/2025

Geospatial or map data maintained by the Harris Central Appraisal District is for informational purposes and may **not** have been prepared for or be suitable for legal, engineering, or surveying purposes. It does **not** represent an on-the-ground survey and only represents the approximate location of property boundaries.

MAP LOCATION



FACET

4071C11

| | | | | |
|---|----|----|----|---|
| 5 | 6 | 7 | 8 | 5 |
| 9 | 10 | 11 | 12 | 9 |
| 1 | 2 | 3 | 4 | 1 |

4071C12

