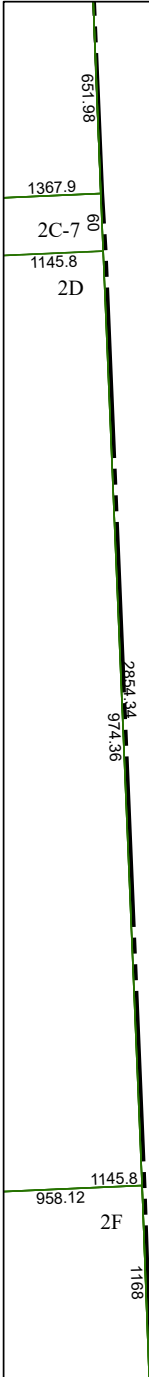


4071A10

4071C1



045-028-000-0001
045-028-000-0002

4071C6

Harris Central Appraisal District



0 45 90 180 Feet

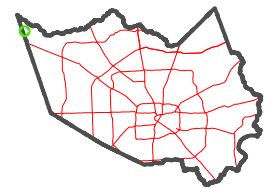
PUBLICATION DATE:
1/5/2023

Geospatial or map data maintained by the Harris Central Appraisal District is for informational purposes and may **not** have been prepared for or be suitable for legal, engineering, or surveying purposes. It does **not** represent an on-the-ground survey and only represents the approximate location of property boundaries.



4071C3

MAP LOCATION



FACET 4071C2

12	9	10	11	12
4	1	2	3	4
8	5	6	7	8