

4071D3

13

4071D6

1292

1708.11

# Harris Central Appraisal District



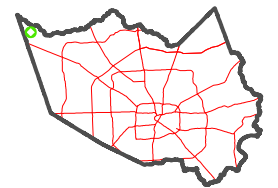
0 45 90 180 Feet

PUBLICATION DATE:  
1/30/2023

Geospatial or map data maintained by the Harris Central Appraisal District is for informational purposes and may **not** have been prepared for or be suitable for legal, engineering, or surveying purposes. It does **not** represent an on-the-ground survey and only represents the approximate location of property boundaries.



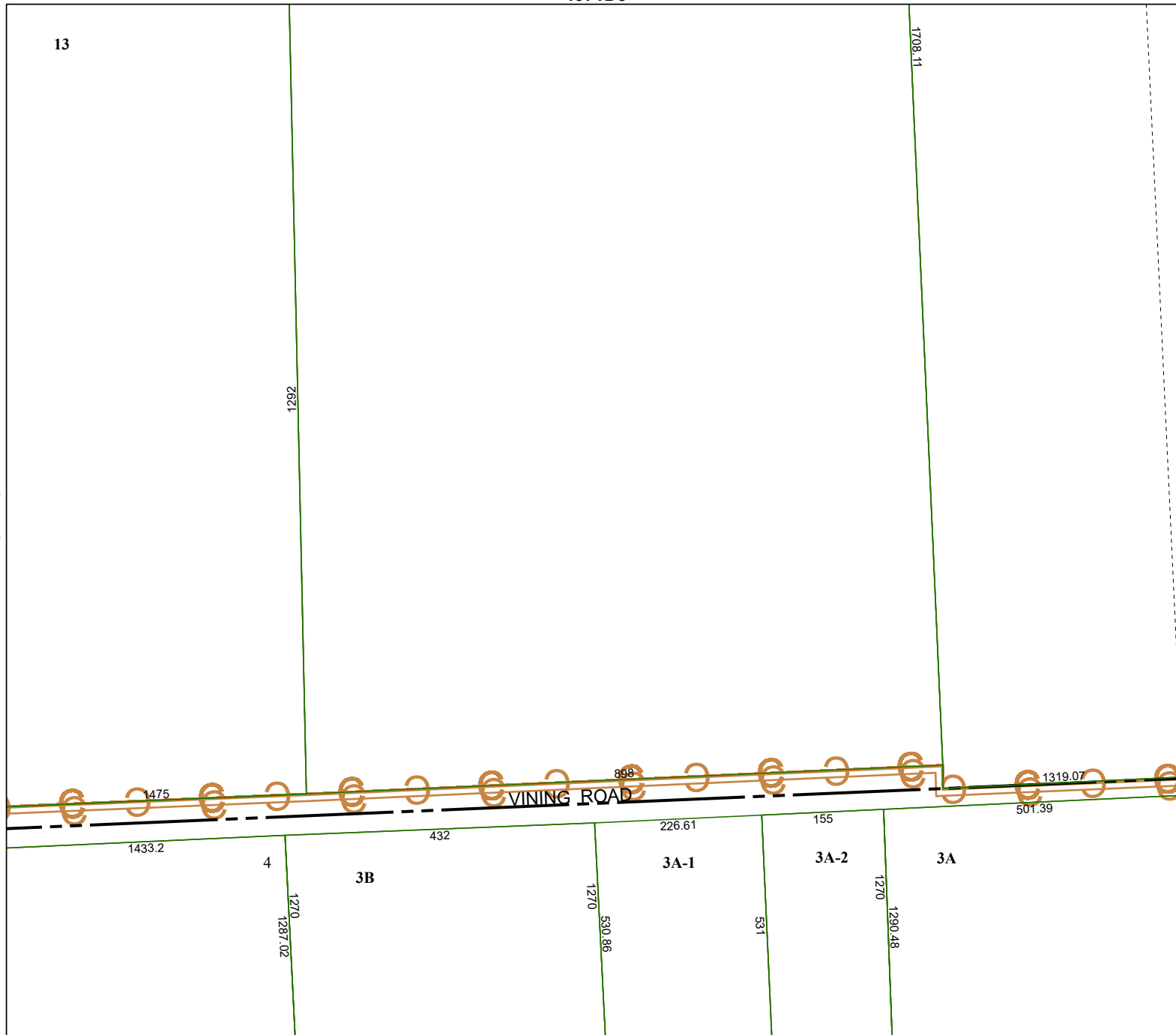
### MAP LOCATION



## FACET 4071D7

1	2	3	4	1
5	6	7	8	5
9	10	11	12	9

4071D11



4071D8