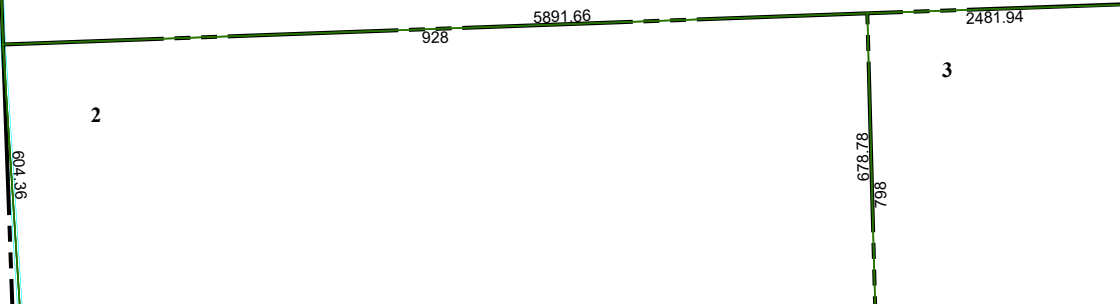


4164B8

4164B11

4730.55
4613.24
604.36



4164D4

Harris Central Appraisal District



0 45 90 180 Feet

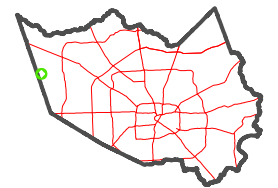
PUBLICATION DATE:
1/5/2023

Geospatial or map data maintained by the Harris Central Appraisal District is for informational purposes and may **not** have been prepared for or be suitable for legal, engineering, or surveying purposes. It does **not** represent an on-the-ground survey and only represents the approximate location of property boundaries.



4264A9

MAP LOCATION



FACET 4164B12

6	7	8	5	6
10	11	12	9	10
2	3	4	1	2