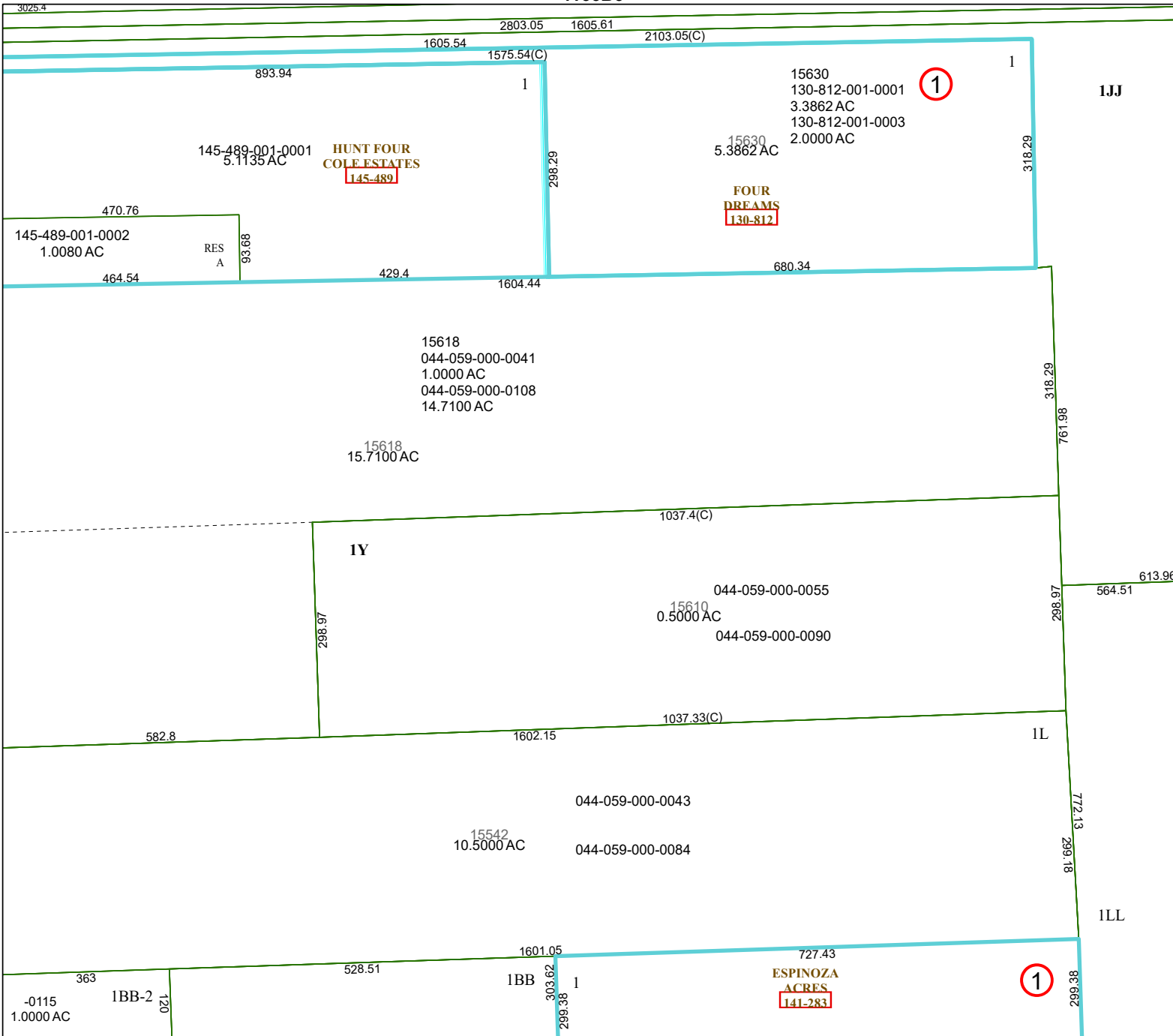


4166B6



4166D2

# Harris Central Appraisal District



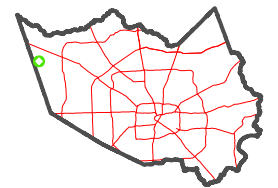
0 45 90 180 Feet

PUBLICATION DATE: 4/22/2024

Geospatial or map data maintained by the Harris Central Appraisal District is for informational purposes and may not have been prepared for or be suitable for legal, engineering, or surveying purposes. It does not represent an on-the-ground survey and only represents the approximate location of property boundaries.



## MAP LOCATION



# FACET 4166B10

8	5	6	7	8
12	9	10	11	12
4	1	2	3	4

4166B9

4166B11

1JJ

1

1JJ

1Y

1L

1LL

1BB

1

1