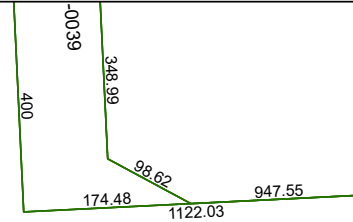


4169C12



Harris Central Appraisal District



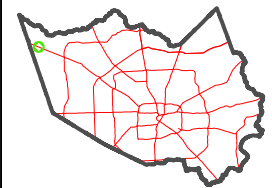
0 45 90 180 Feet

PUBLICATION DATE:
4/8/2024

Geospatial or map data maintained by the Harris Central Appraisal District is for informational purposes and may **not** have been prepared for or be suitable for legal, engineering, or surveying purposes. It does **not** represent an on-the-ground survey and only represents the approximate location of property boundaries.



MAP LOCATION



FACET 4168A4

10	11	12	9	10
2	3	4	1	2
6	7	8	5	6

4168A3

4168B1

15A

16A

3959.58

2426.65

15A

16

693.76

343.86

042-251-000-0037
49.0000 AC

4168A8