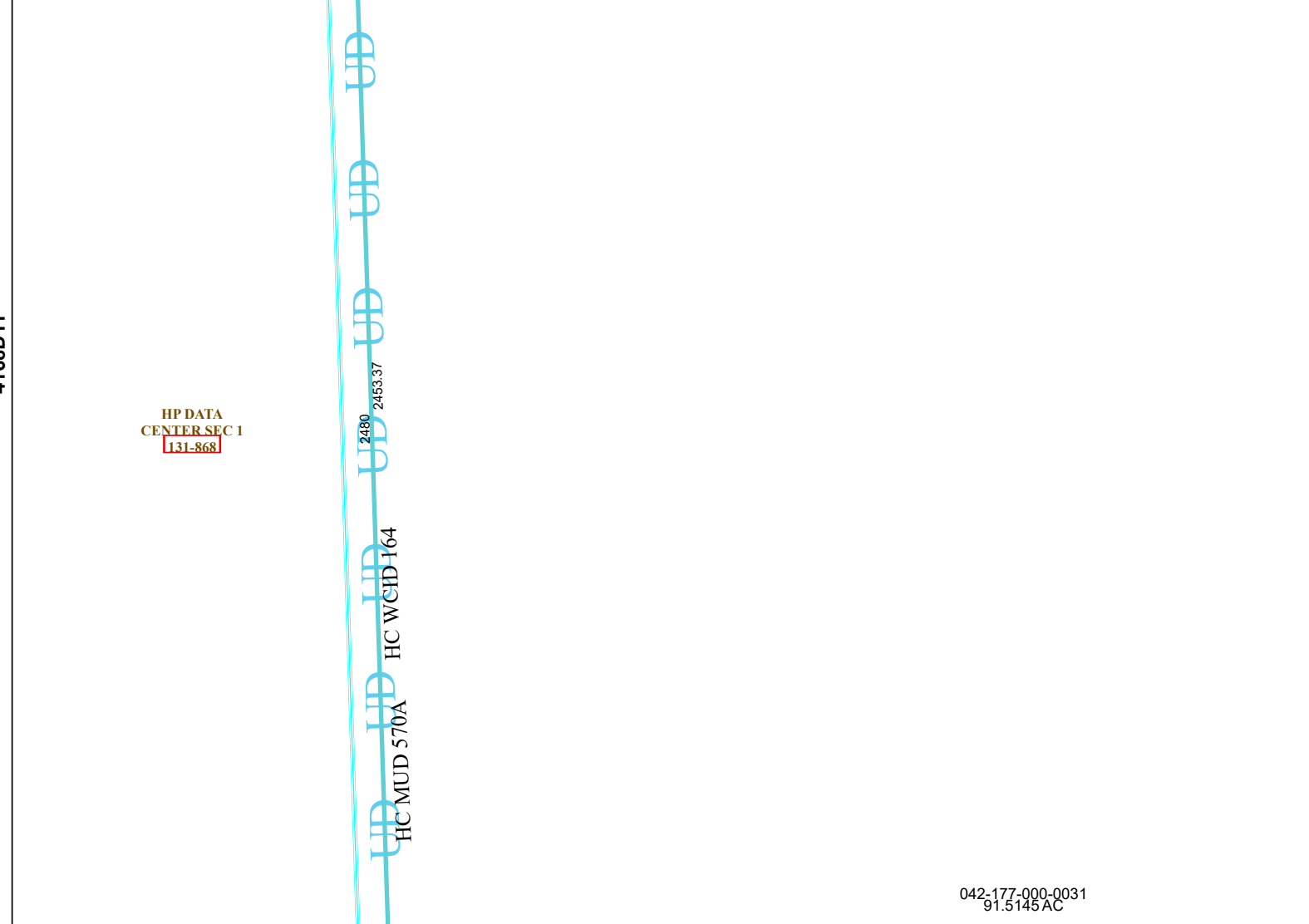
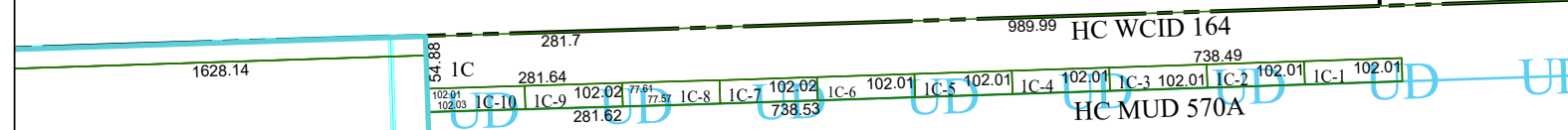
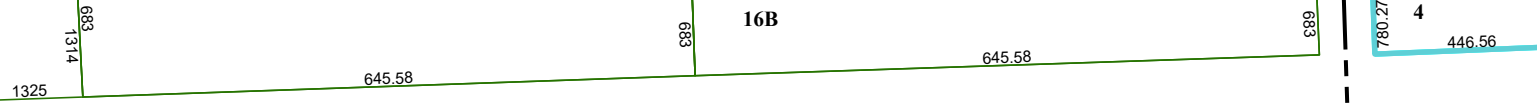


4168D8

16B



HP DATA  
CENTER SEC 1  
131-868

# Harris Central Appraisal District



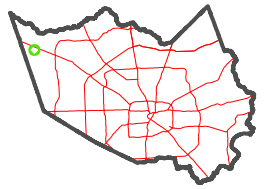
0 45 90 180 Feet

PUBLICATION DATE:  
3/11/2024

Geospatial or map data maintained by the Harris Central Appraisal District is for informational purposes and may not have been prepared for or be suitable for legal, engineering, or surveying purposes. It does not represent an on-the-ground survey and only represents the approximate location of property boundaries.



### MAP LOCATION



## FACET 4168D12

6	7	8	5	6
10	11	12	9	10
2	3	4	1	2

042-177-000-0031  
91.5145 AC

4167B4

4168D11

4268C9