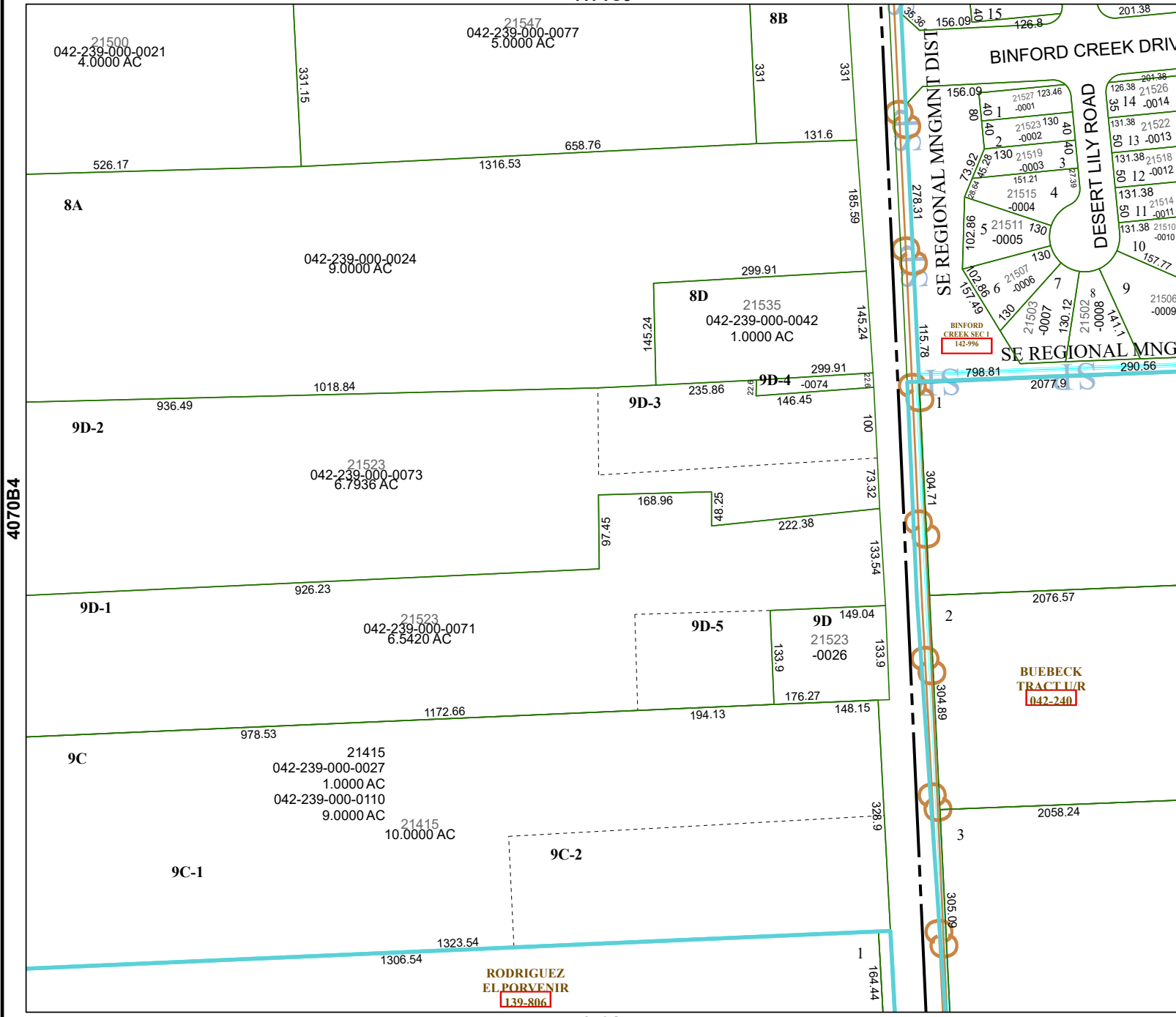


4171C9



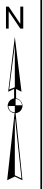
Harris Central Appraisal District



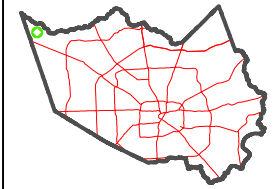
0 50 100 200 Feet

PUBLICATION DATE: 3/2/2026

Geospatial or map data maintained by the Harris Central Appraisal District is for informational purposes and may not have been prepared for or be suitable for legal, engineering, or surveying purposes. It does not represent an on-the-ground survey and only represents the approximate location of property boundaries.



MAP LOCATION



FACET 4170A1

11	12	9	10	11
3	4	1	2	3
7	8	5	6	7

4170A5

4070B4

4170A2