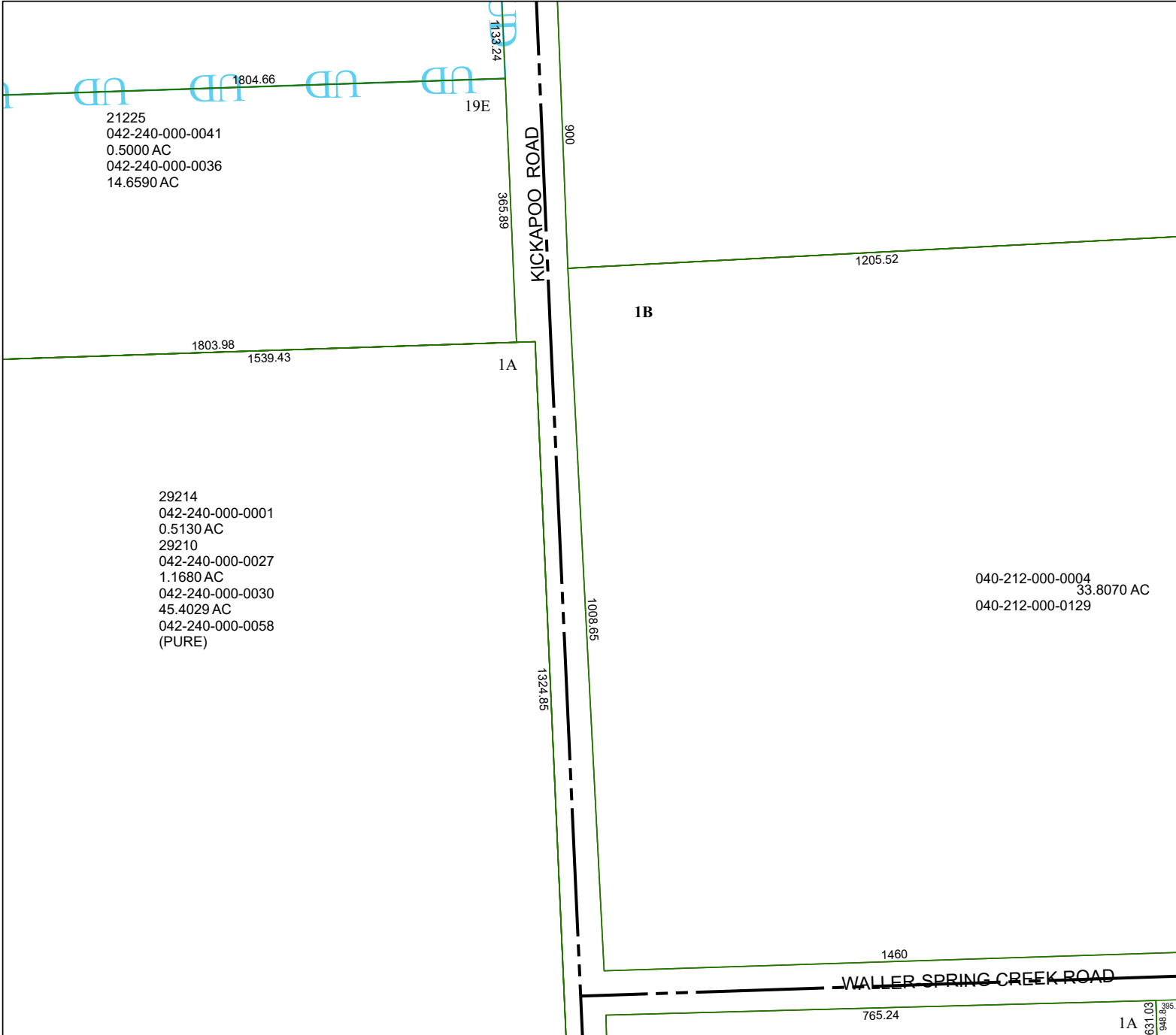


4170A4

4170A7

4170A12



# Harris Central Appraisal District



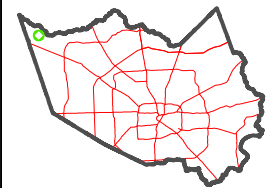
0 50 100 200 Feet

PUBLICATION DATE:  
4/30/2026

Geospatial or map data maintained by the Harris Central Appraisal District is for informational purposes and may **not** have been prepared for or be suitable for legal, engineering, or surveying purposes. It does **not** represent an on-the-ground survey and only represents the approximate location of property boundaries.



## MAP LOCATION



# FACET 4170A8

2	3	4	1	2
6	7	8	5	6
10	11	12	9	10