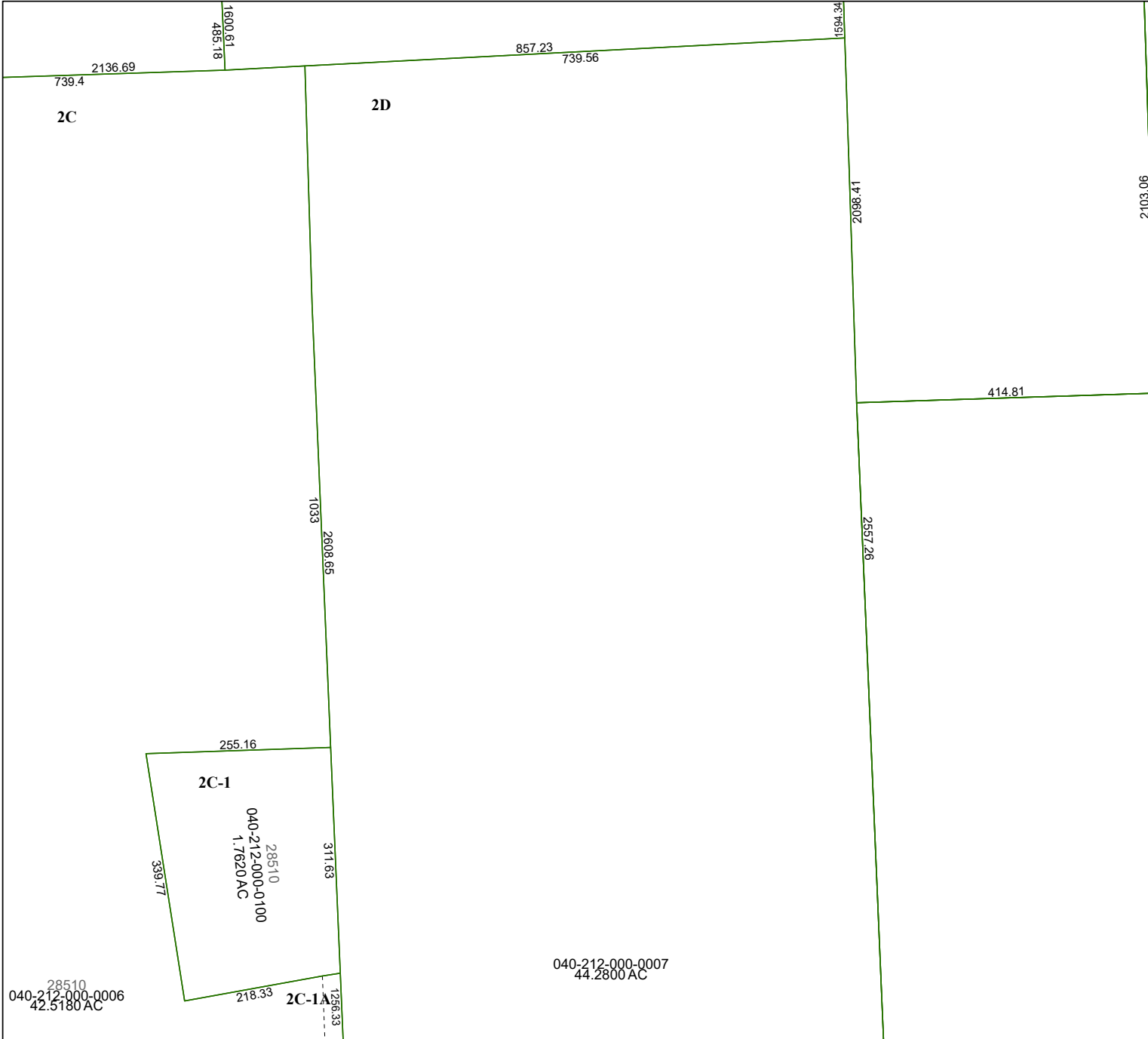


4171D11

4170B2



4170B7

Harris Central Appraisal District



0 45 90 180 Feet

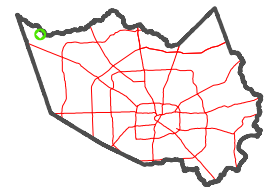
PUBLICATION DATE:
2/27/2023

Geospatial or map data maintained by the Harris Central Appraisal District is for informational purposes and may **not** have been prepared for or be suitable for legal, engineering, or surveying purposes. It does **not** represent an on-the-ground survey and only represents the approximate location of property boundaries.



4170B4

MAP LOCATION



FACET 4170B3

9	10	11	12	9
1	2	3	4	1
5	6	7	8	5