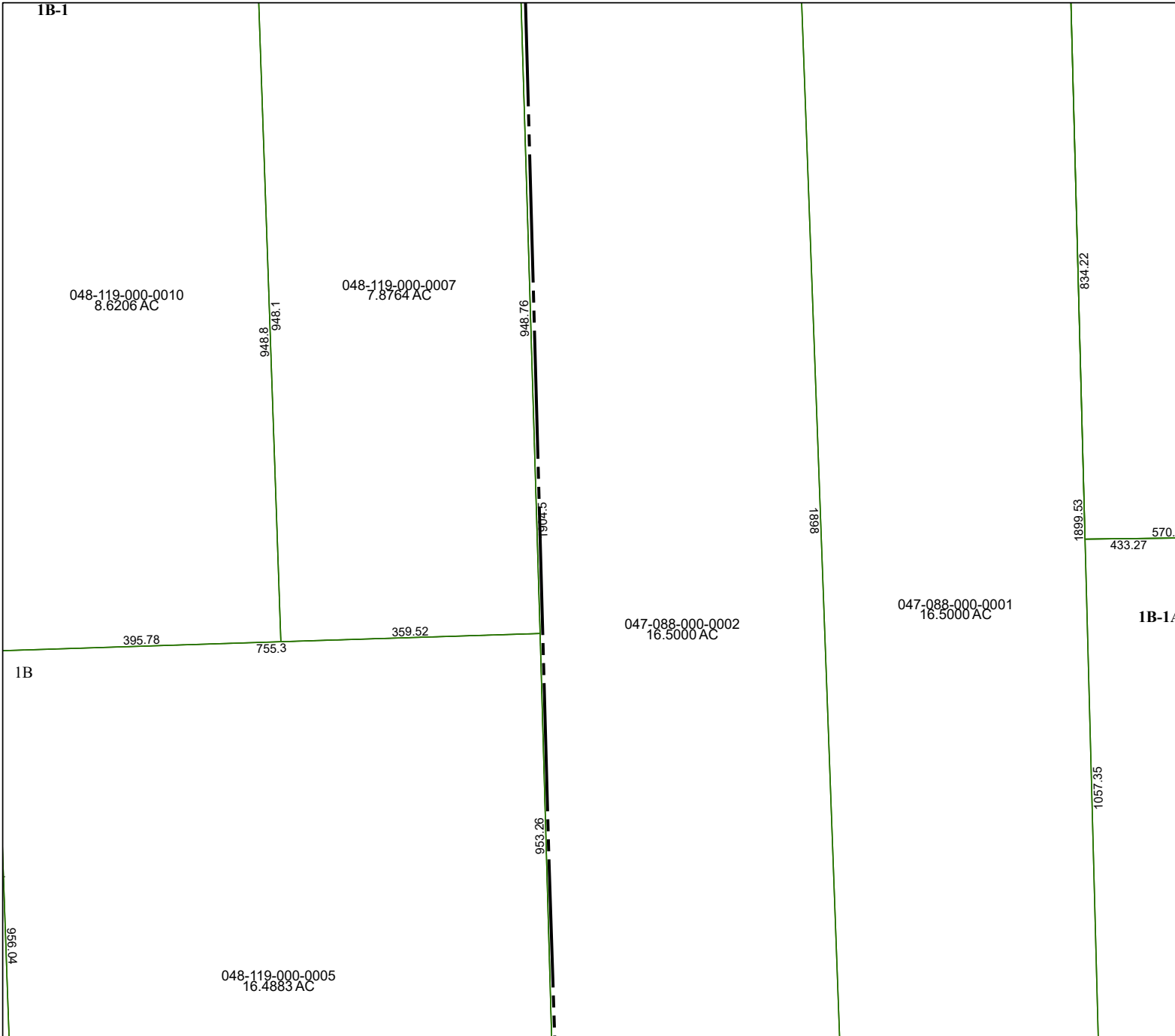


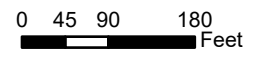
4170B5

1B-1

4170A12



Harris Central Appraisal District

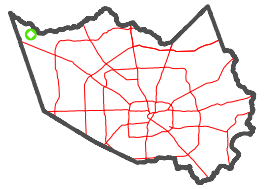


PUBLICATION DATE:
1/29/2024

Geospatial or map data maintained by the Harris Central Appraisal District is for informational purposes and may **not** have been prepared for or be suitable for legal, engineering, or surveying purposes. It does **not** represent an on-the-ground survey and only represents the approximate location of property boundaries.



MAP LOCATION



FACET 4170B9

7	8	5	6	7
11	12	9	10	11
3	4	1	2	3

4170D1

1B-1A

4170B10