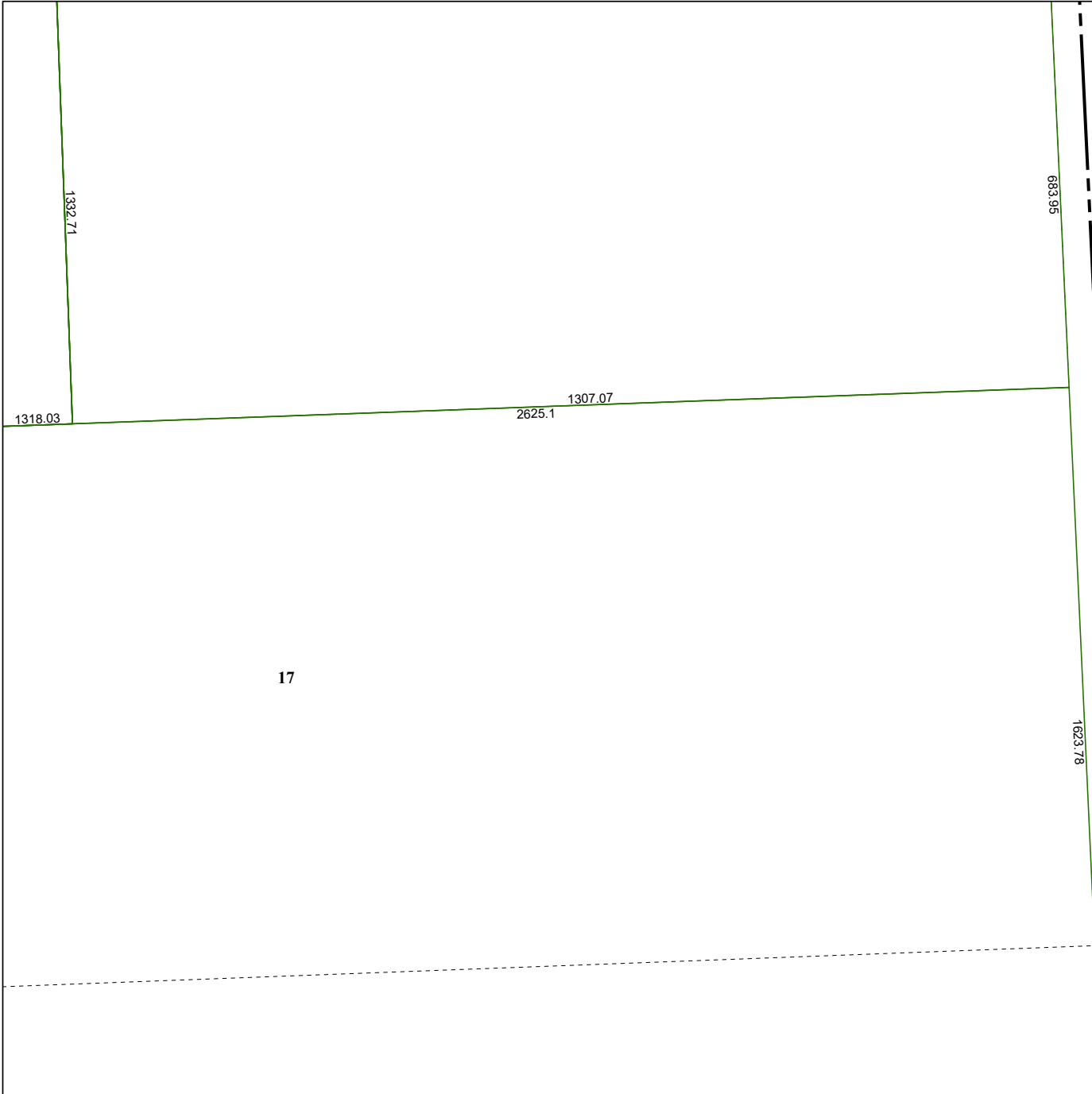


4170A9

4070D4



4C

200

1105.57

206.26

200

1105.57

193.74

193.74

692.3

2653.44

5

562

1623.78

663

435.6

5A-1

200

435.6

Harris Central Appraisal District



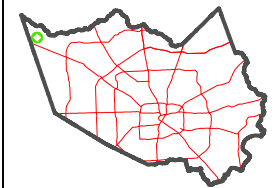
0 45 90 180 Feet

PUBLICATION DATE:
1/29/2024

Geospatial or map data maintained by the Harris Central Appraisal District is for informational purposes and may **not** have been prepared for or be suitable for legal, engineering, or surveying purposes. It does **not** represent an on-the-ground survey and only represents the approximate location of property boundaries.



MAP LOCATION



FACET 4170C1

11	12	9	10	11
3	4	1	2	3
7	8	5	6	7

4170C5