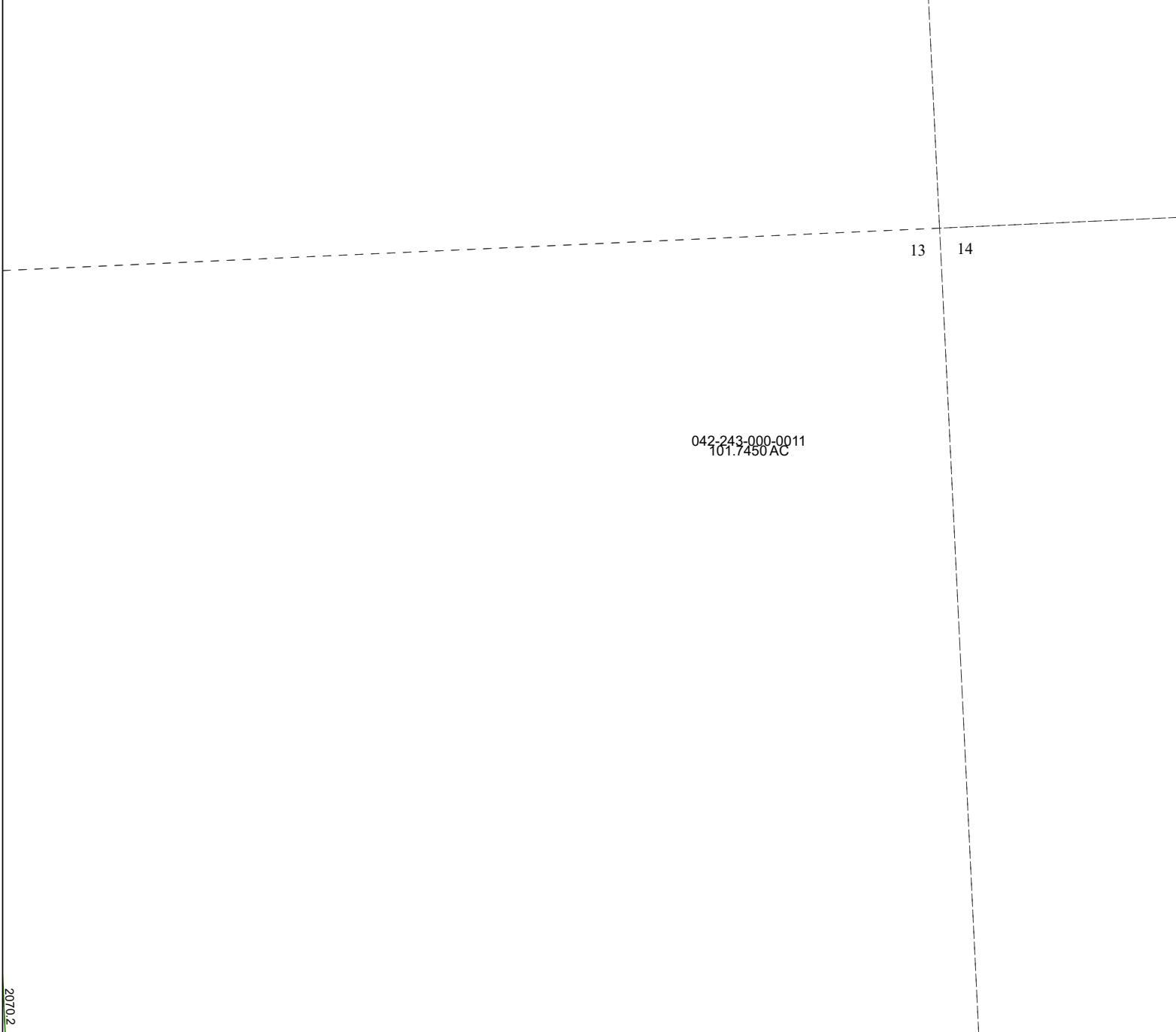


4170C6

4170C9



042-243-000-0011
101.7450 AC

13 14

Harris Central Appraisal District



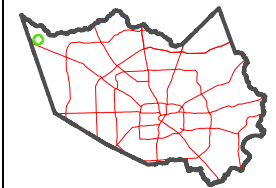
0 45 90 180
Feet

PUBLICATION DATE:
1/5/2023

Geospatial or map data maintained by the Harris Central Appraisal District is for informational purposes and may **not** have been prepared for or be suitable for legal, engineering, or surveying purposes. It does **not** represent an on-the-ground survey and only represents the approximate location of property boundaries.



MAP LOCATION



FACET 4170C10

8	5	6	7	8
12	9	10	11	12
4	1	2	3	4

20702

4169A2