

4171C8

4171C11

# Harris Central Appraisal District



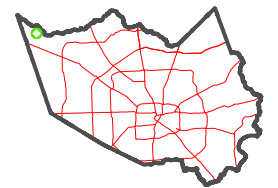
0 45 90 180 Feet

PUBLICATION DATE:  
5/22/2023

Geospatial or map data maintained by the Harris Central Appraisal District is for informational purposes and may **not** have been prepared for or be suitable for legal, engineering, or surveying purposes. It does **not** represent an on-the-ground survey and only represents the approximate location of property boundaries.

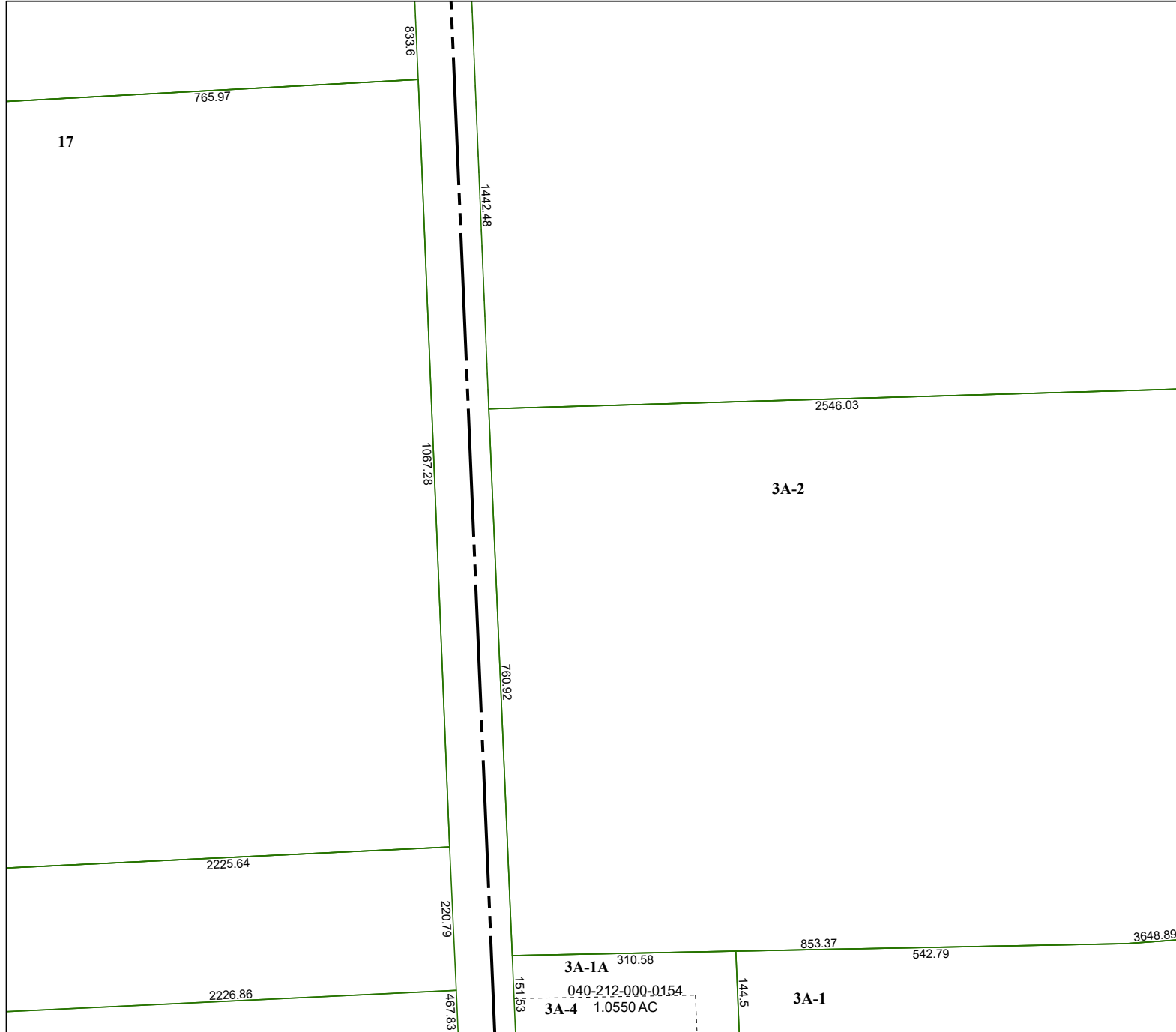


### MAP LOCATION



## FACET 4171C12

6	7	8	5	6
10	11	12	9	10
2	3	4	1	2



4170A4

4171D9