

4171A10

Harris Central Appraisal District



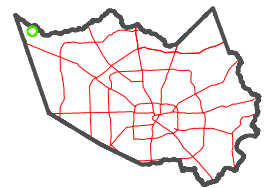
0 45 90 180 Feet

PUBLICATION DATE:
1/5/2023

Geospatial or map data maintained by the Harris Central Appraisal District is for informational purposes and may **not** have been prepared for or be suitable for legal, engineering, or surveying purposes. It does **not** represent an on-the-ground survey and only represents the approximate location of property boundaries.



MAP LOCATION



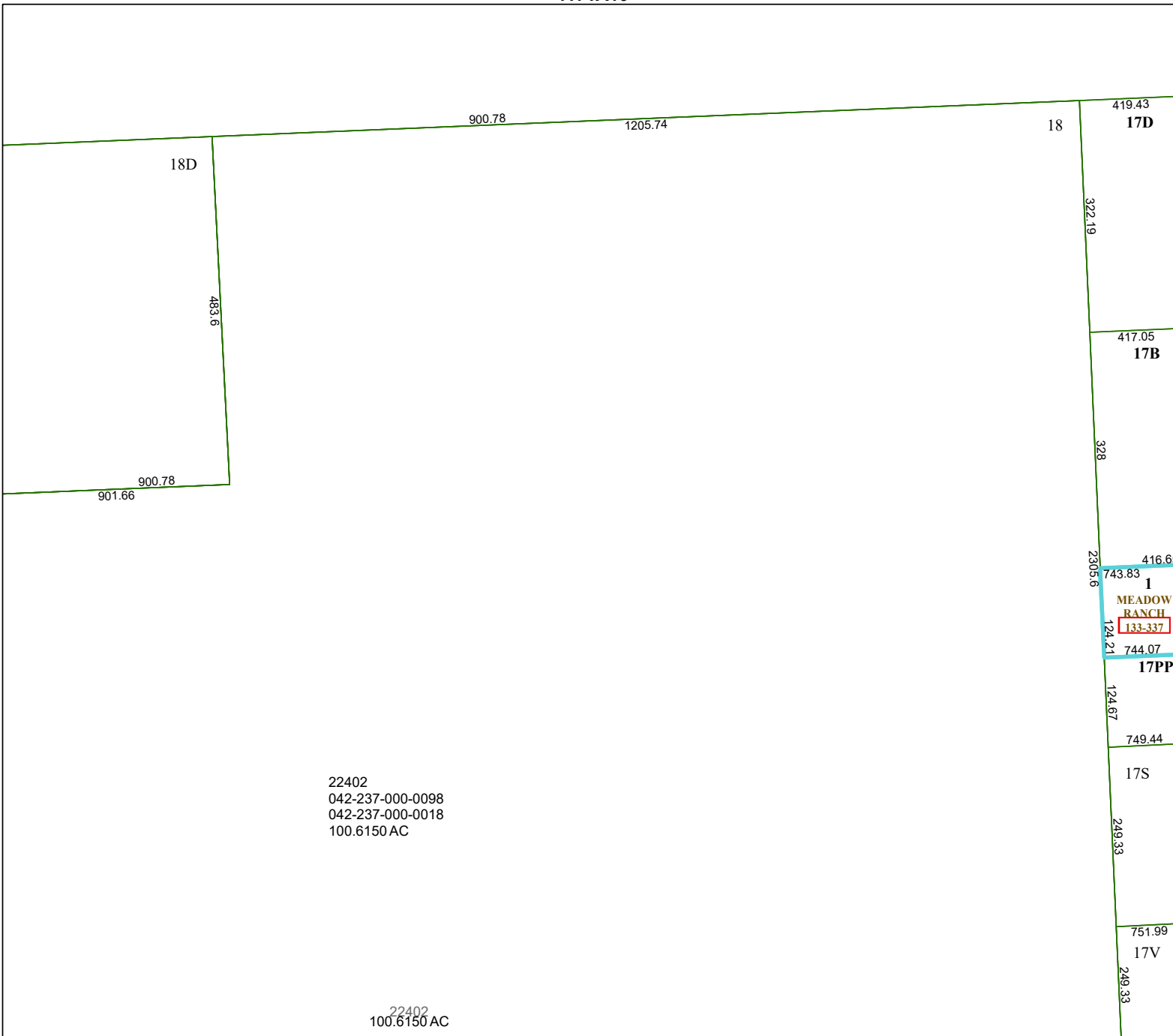
FACET 4171C2

12	9	10	11	12
4	1	2	3	4
8	5	6	7	8

4171C1

4171C3

4171C6



22402
042-237-000-0098
042-237-000-0018
100.6150 AC

22402
100.6150 AC