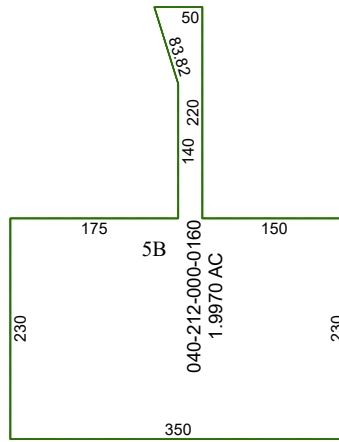


4171B12

4171D3



# Harris Central Appraisal District



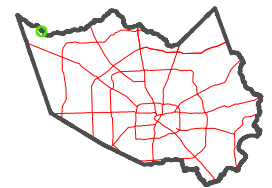
0 50 100 200  
Feet

PUBLICATION DATE:  
12/3/2025

Geospatial or map data maintained by the Harris Central Appraisal District is for informational purposes and may **not** have been prepared for or be suitable for legal, engineering, or surveying purposes. It does **not** represent an on-the-ground survey and only represents the approximate location of property boundaries.



## MAP LOCATION



# FACET

4171D4

10	11	12	9	10
2	3	4	1	2
6	7	8	5	6

4171D8

4271C1