

# Harris Central Appraisal District

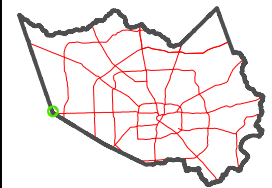


0 45 90 180 Feet

PUBLICATION DATE: 1/9/2025

Geospatial or map data maintained by the Harris Central Appraisal District is for informational purposes and may not have been prepared for or be suitable for legal, engineering, or surveying purposes. It does not represent an on-the-ground survey and only represents the approximate location of property boundaries.

MAP LOCATION



## FACET 4258B12

6	7	8	5	6
10	11	12	9	10
2	3	4	1	2

4258B8

AVENUE D PLAZA  
120-500

BSR KATY  
142-699

ELEVENTH STREET

RES A  
139-698-001-0001  
1.6699 AC  
ACT INVESTORS GROUP  
139-698

5A  
022-036-000-0046  
2.1938 AC

1

4258D4

AVENUE D

KATY OUTLOTS  
022-032

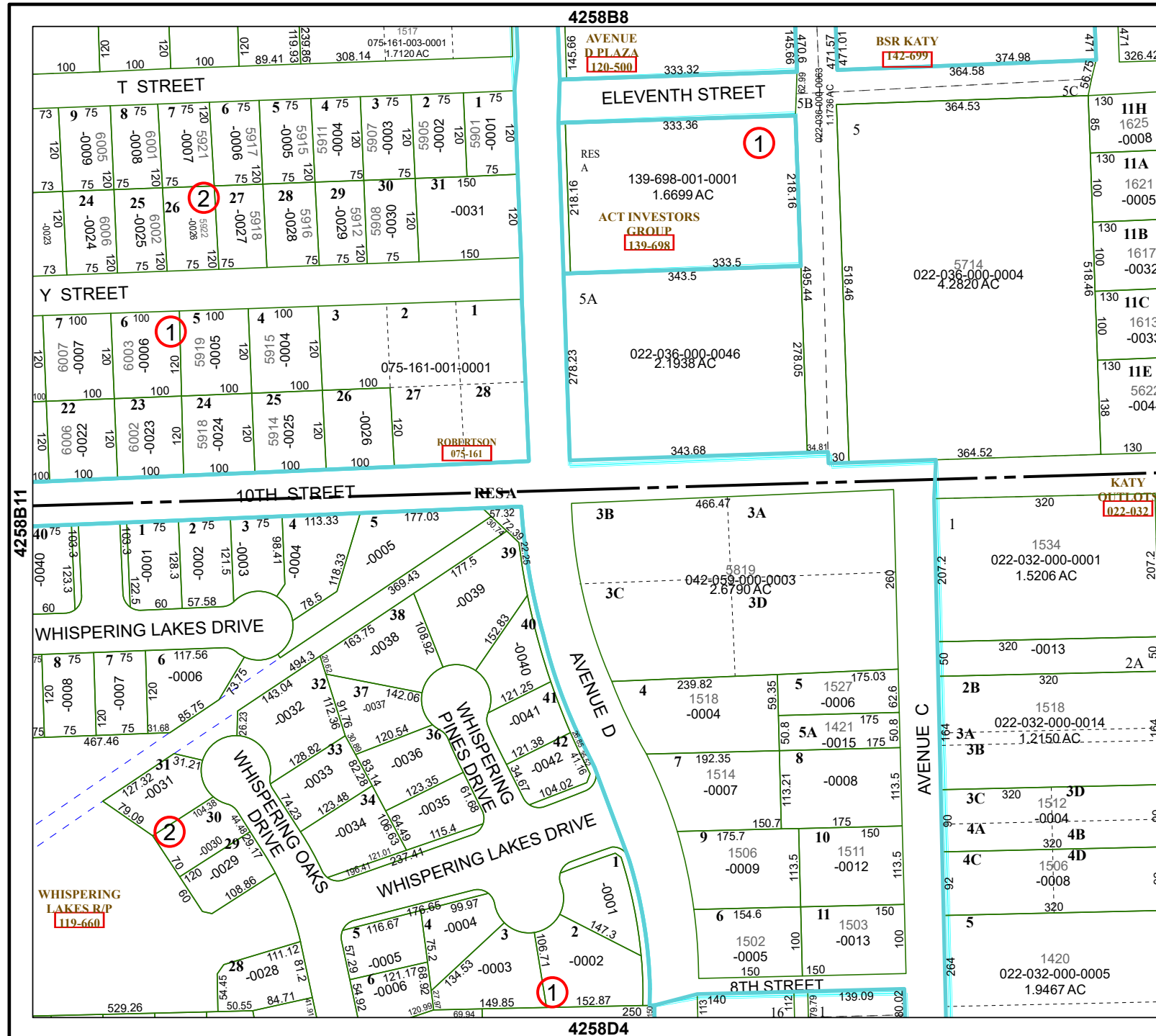
WHISPERING PINES DRIVE

8TH STREET

1

4258D4

4258D4



4258B11

4358A9

