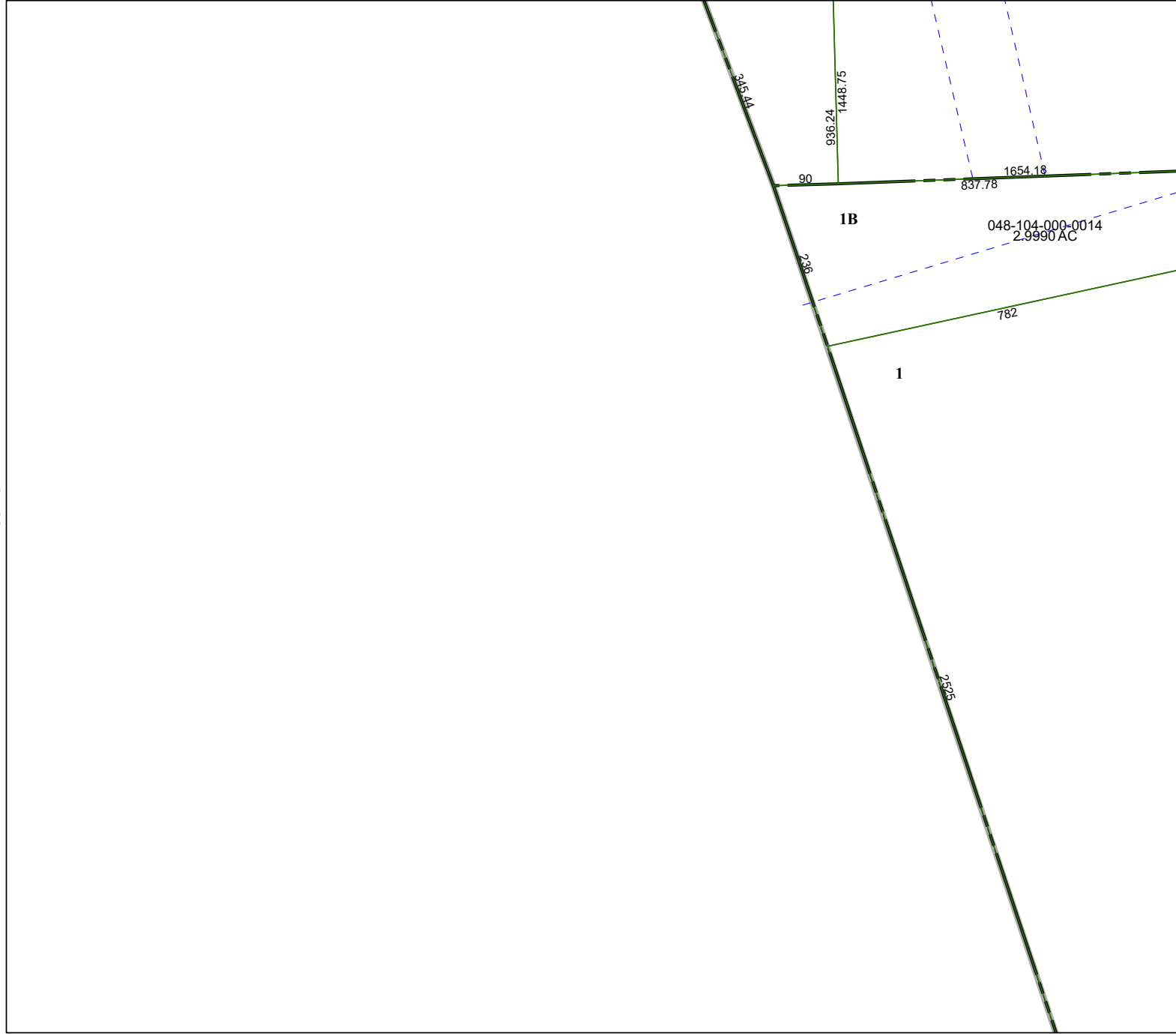


4259B1

4259A8



Harris Central Appraisal District



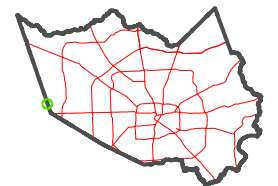
0 45 90 180 Feet

PUBLICATION DATE:
2/13/2024

Geospatial or map data maintained by the Harris Central Appraisal District is for informational purposes and may **not** have been prepared for or be suitable for legal, engineering, or surveying purposes. It does **not** represent an on-the-ground survey and only represents the approximate location of property boundaries.



MAP LOCATION



FACET 4259B5

	1	2	3
	5	6	7
	9	10	11

4259B9

4259B6