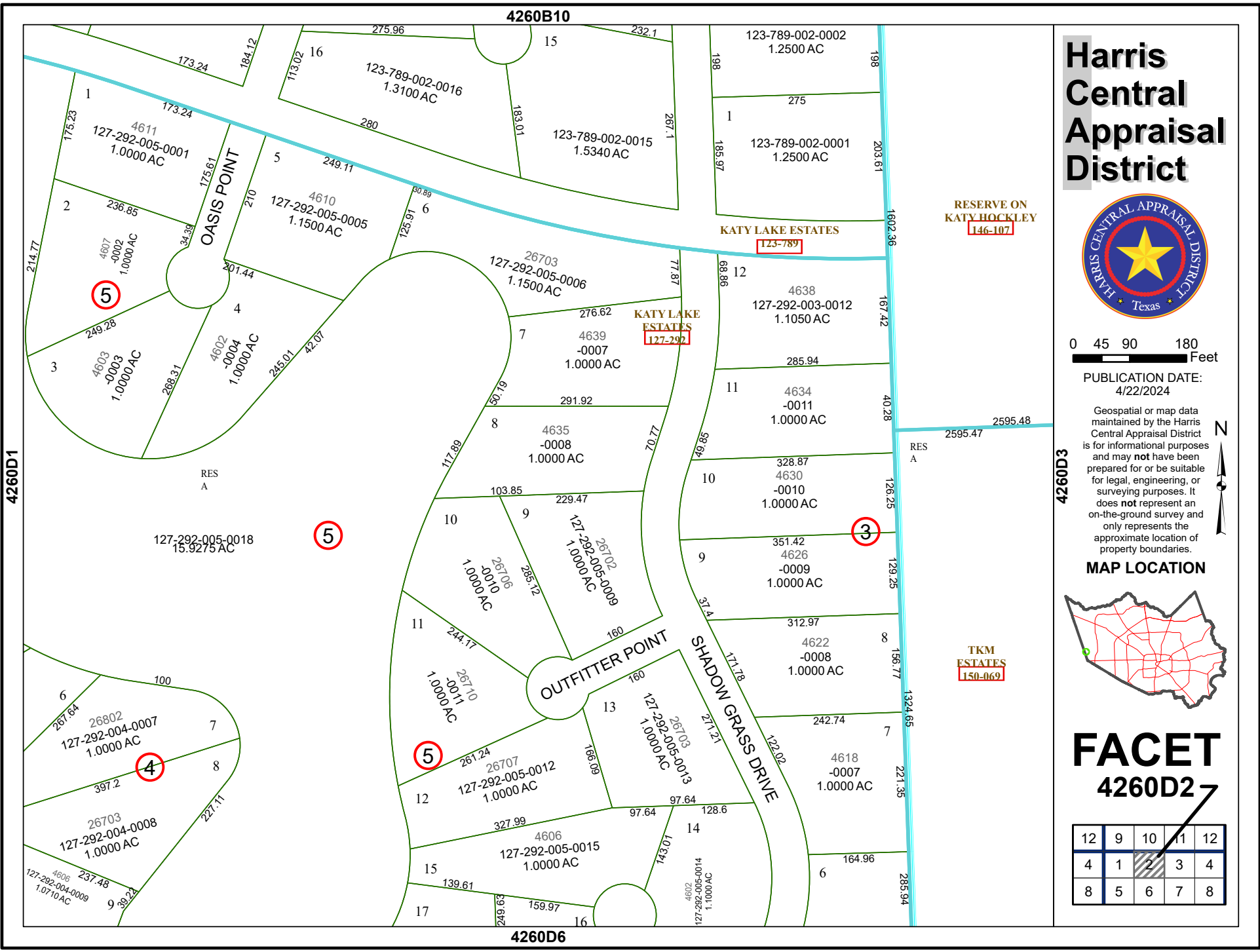


4260B10

4260D6



# Harris Central Appraisal District

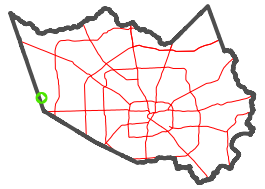


0 45 90 180 Feet

PUBLICATION DATE: 4/22/2024

Geospatial or map data maintained by the Harris Central Appraisal District is for informational purposes and may not have been prepared for or be suitable for legal, engineering, or surveying purposes. It does not represent an on-the-ground survey and only represents the approximate location of property boundaries.

MAP LOCATION



## FACET 4260D2

12	9	10	11	12
4	1	2	3	4
8	5	6	7	8

RESERVE ON  
KATY HOCKLEY  
146-107

KATY LAKE ESTATES  
123-789

KATY LAKE ESTATES  
127-292

TKM ESTATES  
150-069

4260D1

4260D3