

4260B12

# Harris Central Appraisal District



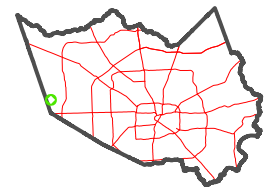
0 45 90 180 Feet

PUBLICATION DATE:  
4/22/2024

Geospatial or map data maintained by the Harris Central Appraisal District is for informational purposes and may not have been prepared for or be suitable for legal, engineering, or surveying purposes. It does not represent an on-the-ground survey and only represents the approximate location of property boundaries.



MAP LOCATION



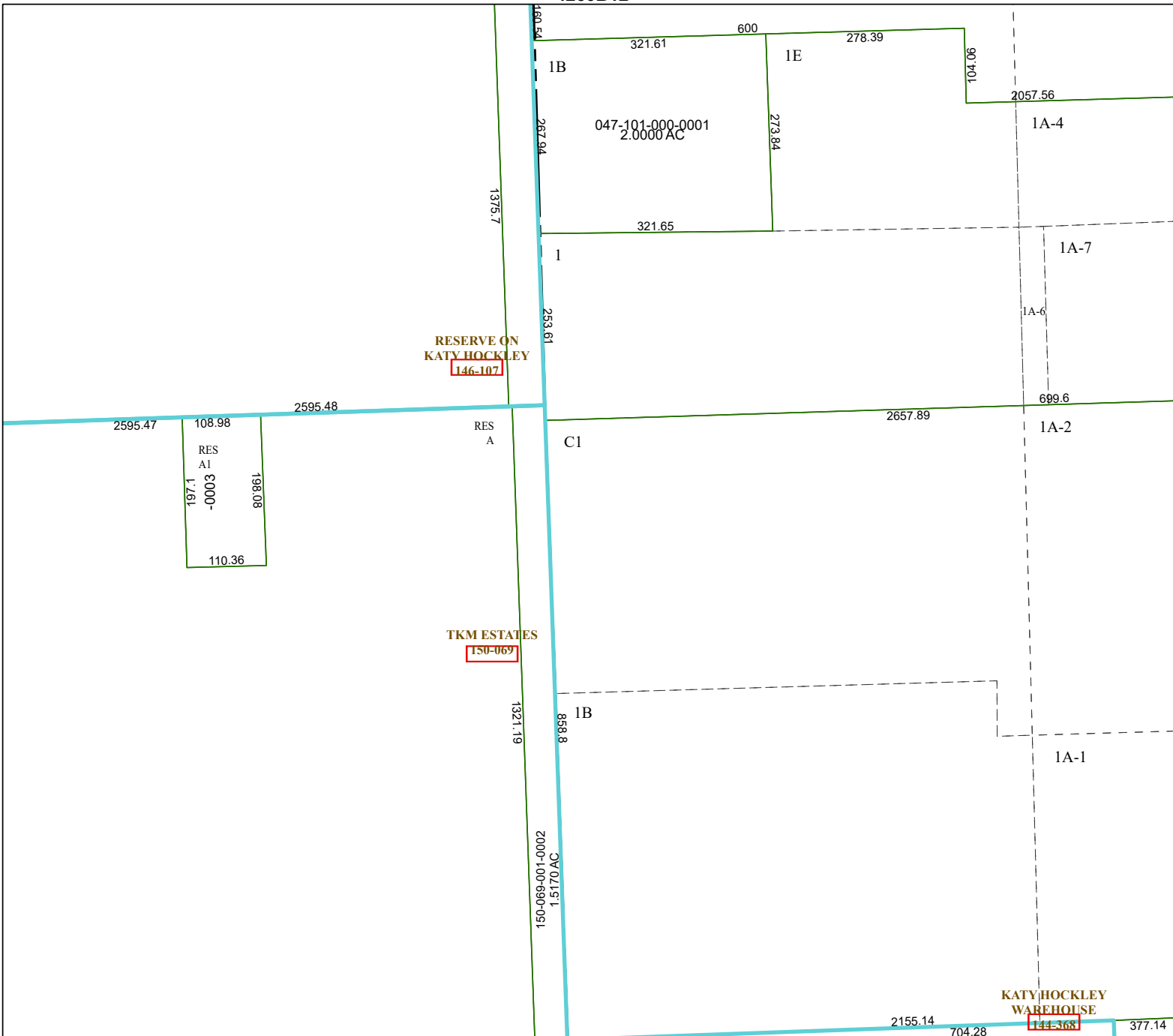
## FACET

4260D4

10	11	12	9	10
2	3	4	1	2
6	7	8	5	6

4260D3

4360C1



RESERVE ON  
KATY HOCKLEY  
146-107

TKM ESTATES  
150-069

KATY HOCKLEY  
WAREHOUSE  
144-368

4260D8