

4262C11

Harris Central Appraisal District



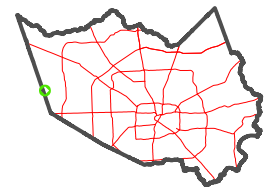
0 45 90 180 Feet

PUBLICATION DATE:
1/5/2023

Geospatial or map data maintained by the Harris Central Appraisal District is for informational purposes and may **not** have been prepared for or be suitable for legal, engineering, or surveying purposes. It does **not** represent an on-the-ground survey and only represents the approximate location of property boundaries.



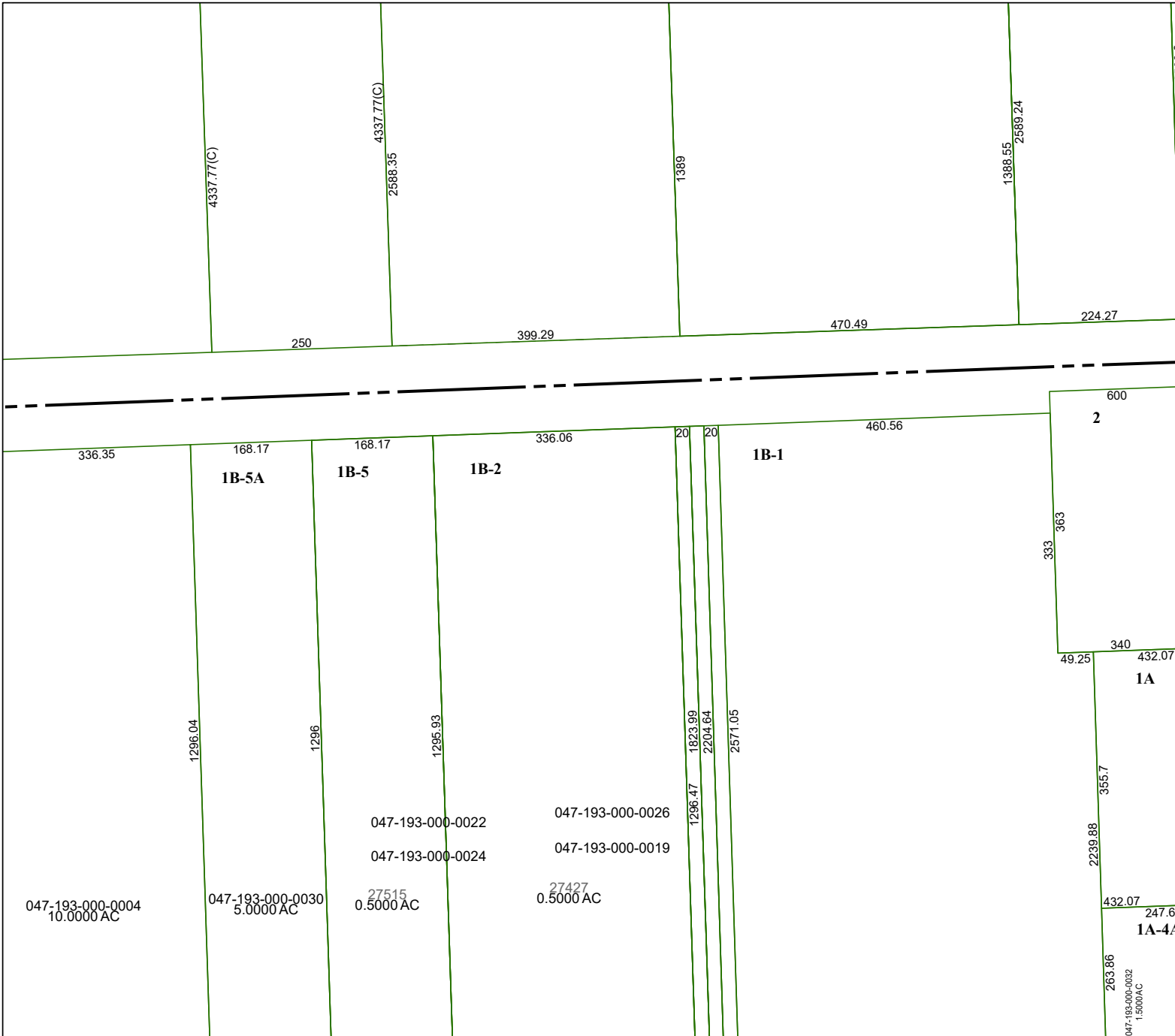
MAP LOCATION



FACET 4261A3

9	10	11	12	9
1	2	3	4	1
5	6	7	8	5

4261A2



4261A7

2589.6

1388.55
2589.24

1389

4337.77(C)
2588.35

4337.77(C)

250

399.29

470.49

224.27

600

2

460.56

336.06

168.17

1B-5A

1B-5

1B-2

1B-1

336.35

168.17

333
363

340

432.07

1A

49.25

355.7

2239.88

432.07

247.62

1A-4A

263.86

047-193-000-0032
1.5000 AC

047-193-000-0022

047-193-000-0026

047-193-000-0024

047-193-000-0019

27515
0.5000 AC

27427
0.5000 AC

047-193-000-0004
10.0000 AC

047-193-000-0030
5.0000 AC

1296.04

1296

1295.93

1296.47

1823.99

2204.64

2571.05

168.17