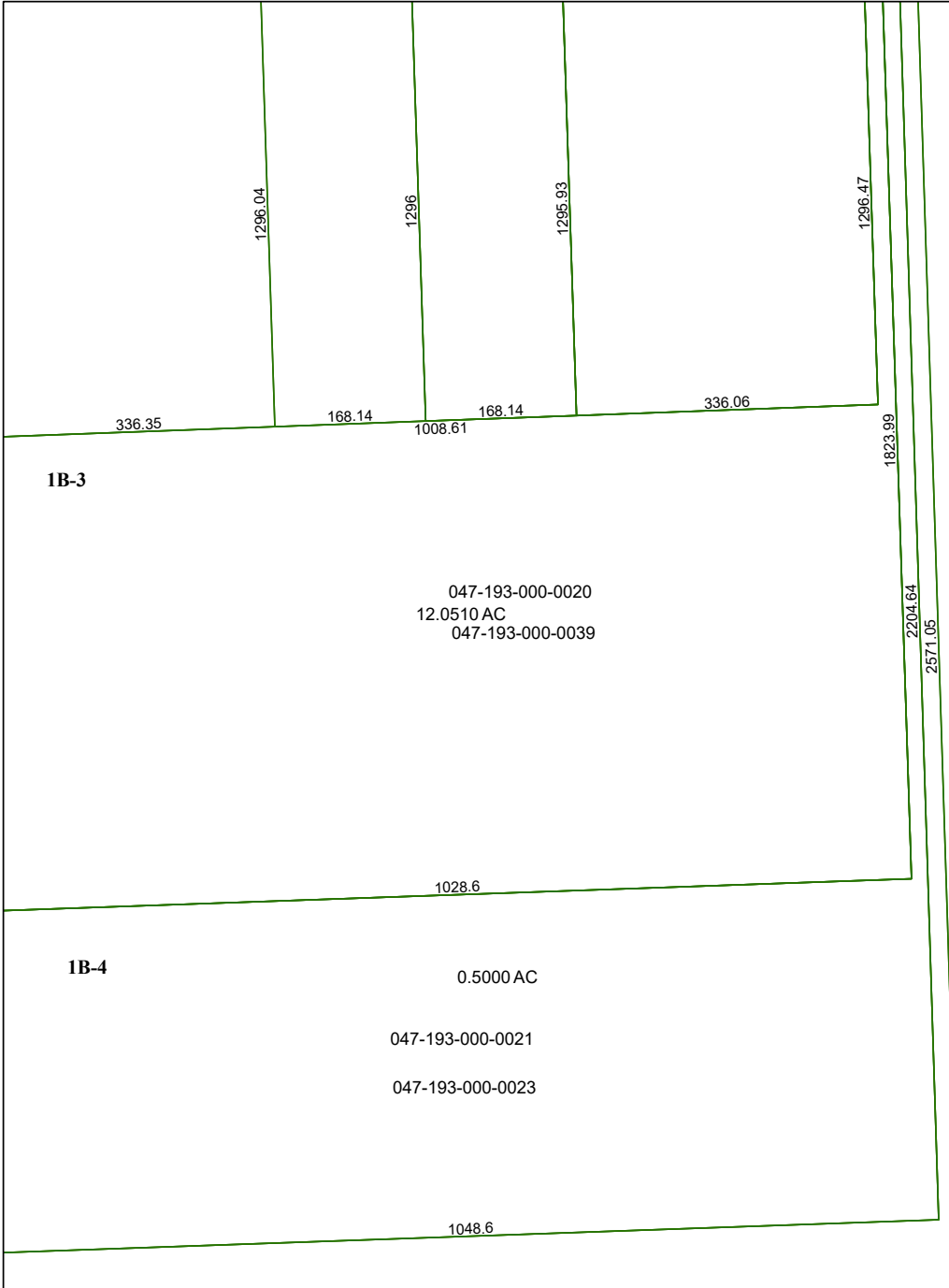


4261A3

4261A6



4261A11

047-193-000-0010
30.0000 AC

Harris Central Appraisal District



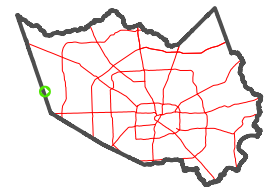
0 45 90 180 Feet

PUBLICATION DATE:
3/11/2024

Geospatial or map data maintained by the Harris Central Appraisal District is for informational purposes and may **not** have been prepared for or be suitable for legal, engineering, or surveying purposes. It does **not** represent an on-the-ground survey and only represents the approximate location of property boundaries.



MAP LOCATION



FACET 4261A7

1	2	3	4	1
5	6	7	8	5
9	10	11	12	9