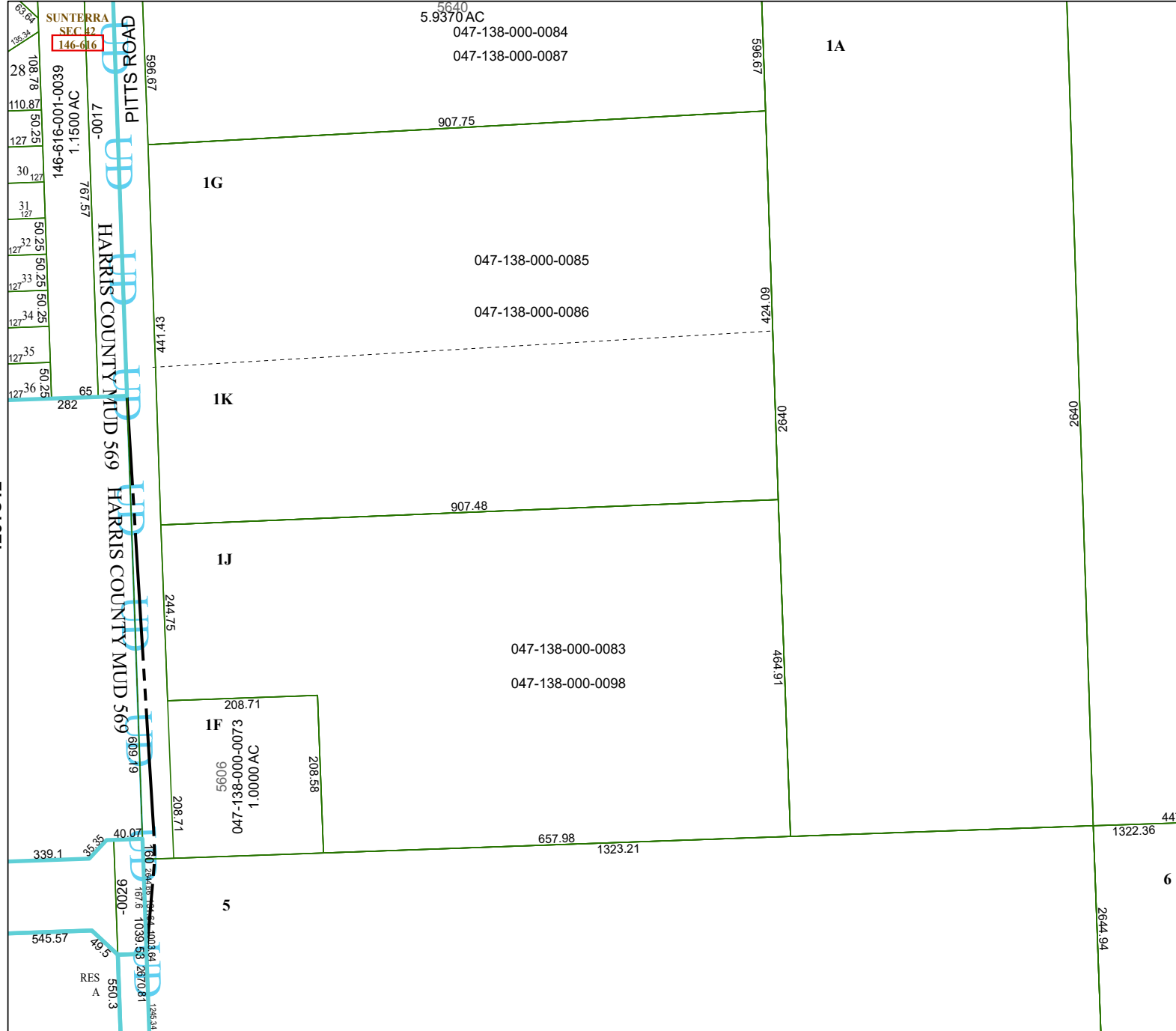


4261D5



4260B1

# Harris Central Appraisal District



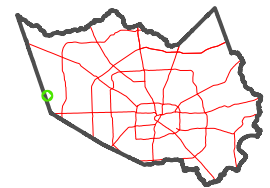
0 45 90 180 Feet

PUBLICATION DATE:  
4/8/2024

Geospatial or map data maintained by the Harris Central Appraisal District is for informational purposes and may **not** have been prepared for or be suitable for legal, engineering, or surveying purposes. It does **not** represent an on-the-ground survey and only represents the approximate location of property boundaries.



## MAP LOCATION



# FACET 4261D9

7	8	5	6	7
11	12	9	10	11
3	4	1	2	3

4261C12

4261D10

6

2644.94

2640

1A

79.965

424.09

2640

464.91

447

1322.36

1323.21

657.98

208.71

244.75

907.48

1K

1G

047-138-000-0085

047-138-000-0086

047-138-000-0083

047-138-000-0098

1F

5606  
047-138-000-0073  
1.0000 AC

208.58

208.71

5

RES  
A

550.3

9200-

40.07

609.19

HARRIS COUNTY MUD 569

HARRIS COUNTY MUD 569

HARRIS COUNTY MUD 569

HARRIS COUNTY MUD 569

HARRIS COUNTY MUD 569

HARRIS COUNTY MUD 569

HARRIS COUNTY MUD 569

HARRIS COUNTY MUD 569

HARRIS COUNTY MUD 569

SUNTERRA SEC 42

146-616-001-0039  
1.1500 AC

146-616

5640

5.9370 AC  
047-138-000-0084  
047-138-000-0087

907.75

79.965

441.43

79.965

146-616-001-0039  
1.1500 AC

146-616

5640

5.9370 AC  
047-138-000-0084  
047-138-000-0087

907.75

79.965

441.43

79.965

146-616-001-0039  
1.1500 AC

146-616

5640

5.9370 AC  
047-138-000-0084  
047-138-000-0087

907.75

79.965

441.43

79.965

146-616-001-0039  
1.1500 AC

146-616

5640

5.9370 AC  
047-138-000-0084  
047-138-000-0087

907.75

79.965

441.43

79.965

146-616-001-0039  
1.1500 AC

146-616

5640

5.9370 AC  
047-138-000-0084  
047-138-000-0087

907.75

79.965

441.43

79.965

146-616-001-0039  
1.1500 AC

146-616

5640

5.9370 AC  
047-138-000-0084  
047-138-000-0087

907.75

79.965

441.43

79.965

146-616-001-0039  
1.1500 AC

146-616

5640

5.9370 AC  
047-138-000-0084  
047-138-000-0087

907.75

79.965

441.43

79.965

146-616-001-0039  
1.1500 AC

146-616

5640

5.9370 AC  
047-138-000-0084  
047-138-000-0087

907.75

79.965

441.43

79.965

146-616-001-0039  
1.1500 AC

146-616

5640

5.9370 AC  
047-138-000-0084  
047-138-000-0087

907.75

79.965

441.43

79.965

146-616-001-0039  
1.1500 AC

146-616

5640

5.9370 AC  
047-138-000-0084  
047-138-000-0087

907.75

79.965

441.43

79.965

146-616-001-0039  
1.1500 AC

146-616

5640

5.9370 AC  
047-138-000-0084  
047-138-000-0087

907.75

79.965

441.43

79.965

146-616-001-0039  
1.1500 AC

146-616

5640

5.9370 AC  
047-138-000-0084  
047-138-000-0087

907.75

79.965

441.43

79.965

146-616-001-0039  
1.1500 AC

146-616

5640

5.9370 AC  
047-138-000-0084  
047-138-000-0087

907.75

79.965

441.43

79.965

146-616-001-0039  
1.1500 AC

146-616

5640

5.9370 AC  
047-138-000-0084  
047-138-000-0087

907.75

79.965

441.43

79.965

146-616-001-0039  
1.1500 AC

146-616

5640

5.9370 AC  
047-138-000-0084  
047-138-000-0087

907.75

79.965

441.43

79.965

146-616-001-0039  
1.1500 AC

146-616

5640

5.9370 AC  
047-138-000-0084  
047-138-000-0087

907.75

79.965

441.43

79.965

146-616-001-0039  
1.1500 AC

146-616

5640

5.9370 AC  
047-138-000-0084  
047-138-000-0087

907.75

79.965

441.43

79.965

146-616-001-0039  
1.1500 AC

146-616

5640

5.9370 AC  
047-138-000-0084  
047-138-000-0087

907.75

79.965

441.43

79.965

146-616-001-0039  
1.1500 AC

146-616

5640

5.9370 AC  
047-138-000-0084  
047-138-000-0087

907.75

79.965

441.43

79.965

146-616-001-0039  
1.1500 AC

146-616

5640

5.9370 AC  
047-138-000-0084  
047-138-000-0087

907.75

79.965

441.43

79.965

146-616-001-0039  
1.1500 AC

146-616

5640

5.9370 AC  
047-138-000-0084  
047-138-000-0087

907.75

79.965

441.43

79.965

146-616-001-0039  
1.1500 AC

146-616

5640

5.9370 AC  
047-138-000-0084  
047-138-000-0087

907.75

79.965

441.43

79.965

146-616-001-0039  
1.1500 AC

146-616

5640

5.9370 AC  
047-138-000-0084  
047-138-000-0087

907.75

79.965

441.43

79.965

146-616-001-0039  
1.1500 AC

146-616

5640

5.9370 AC  
047-138-000-0084  
047-138-000-0087

907.75

79.965

441.43

79.965

146-616-001-0039  
1.1500 AC

146-616

5640

5.9370 AC  
047-138-000-0084  
047-138-000-0087

907.75

79.965

441.43

79.965

146-616-001-0039  
1.1500 AC

146-616

5640

5.9370 AC  
047-138-000-0084  
047-138-000-0087

907.75

7