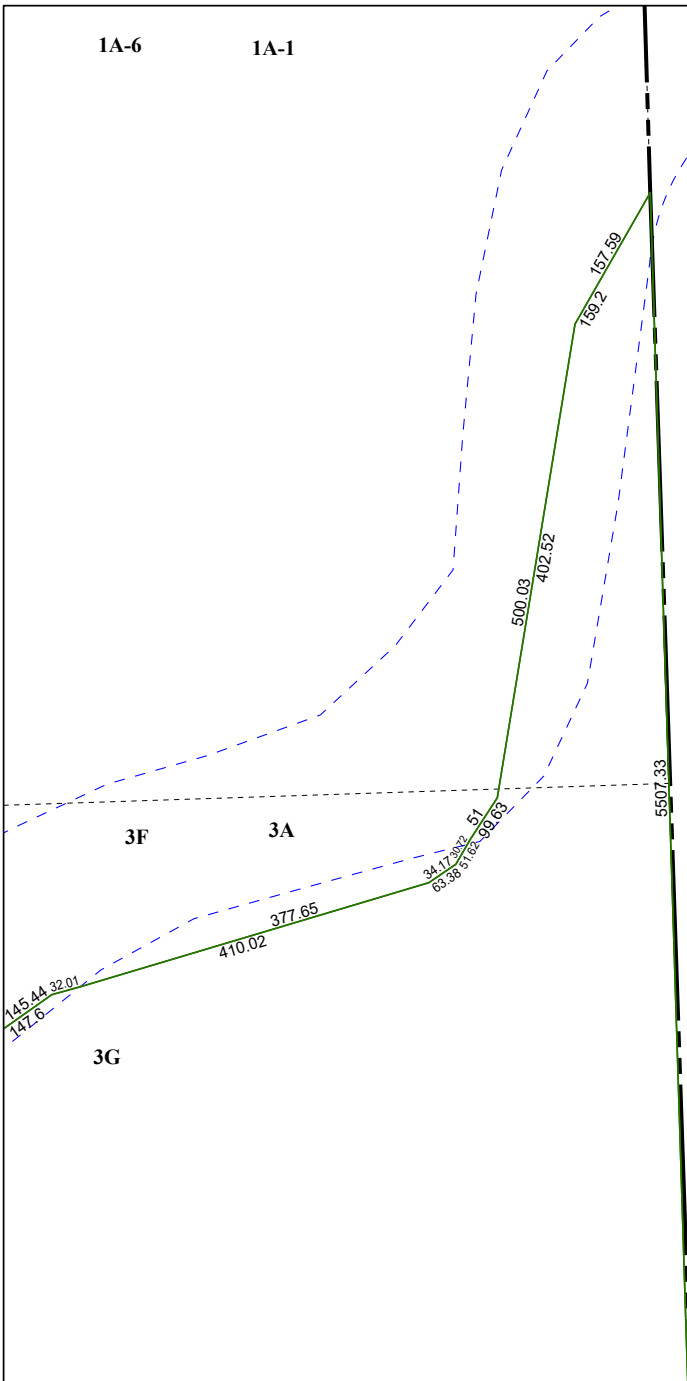


4263A3

1A-6

1A-1

4263A6



3F

3A

3G

4263A11

# Harris Central Appraisal District



0 45 90 180 Feet

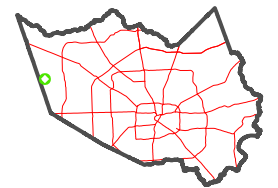
PUBLICATION DATE:  
1/5/2023

Geospatial or map data maintained by the Harris Central Appraisal District is for informational purposes and may **not** have been prepared for or be suitable for legal, engineering, or surveying purposes. It does **not** represent an on-the-ground survey and only represents the approximate location of property boundaries.



4263A8

## MAP LOCATION



# FACET

## 4263A7

1	2	3	4	1
5	6	7	8	5
9	10	11	12	9