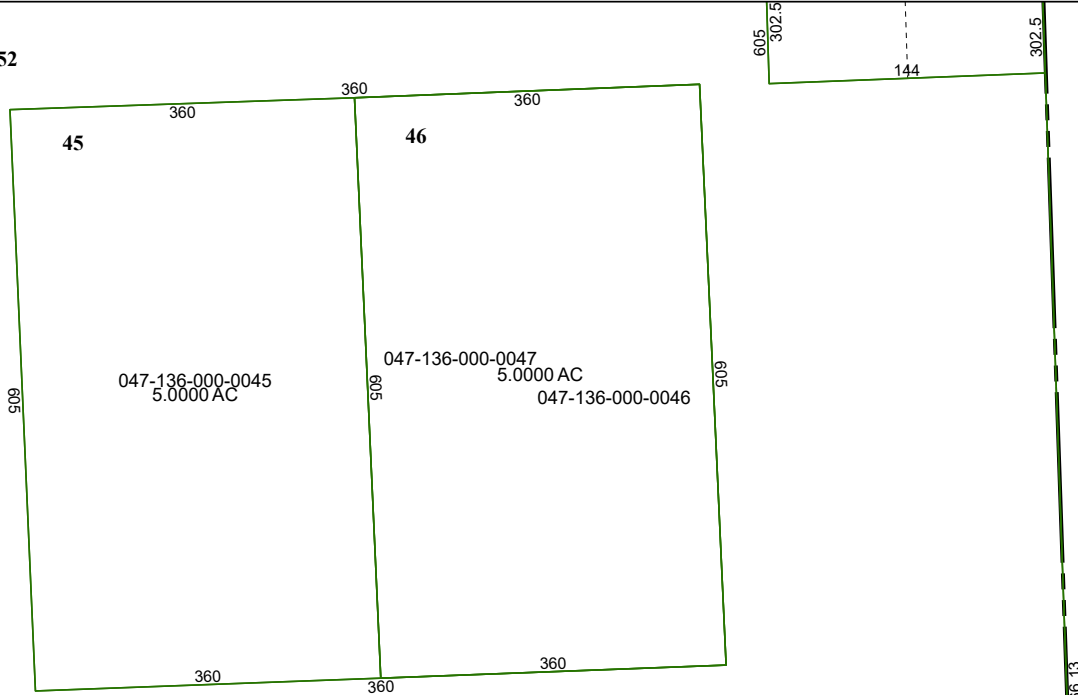


4263B12

52



4263D3

4263D8

Harris Central Appraisal District



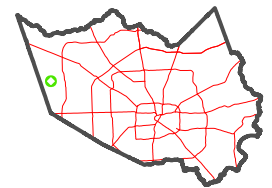
0 45 90 180
Feet

PUBLICATION DATE:
4/22/2024

Geospatial or map data maintained by the Harris Central Appraisal District is for informational purposes and may **not** have been prepared for or be suitable for legal, engineering, or surveying purposes. It does **not** represent an on-the-ground survey and only represents the approximate location of property boundaries.



MAP LOCATION



FACET

4263D4

10	11	12	9	10
2	3	4	1	2
6	7	8	5	6

4363C1