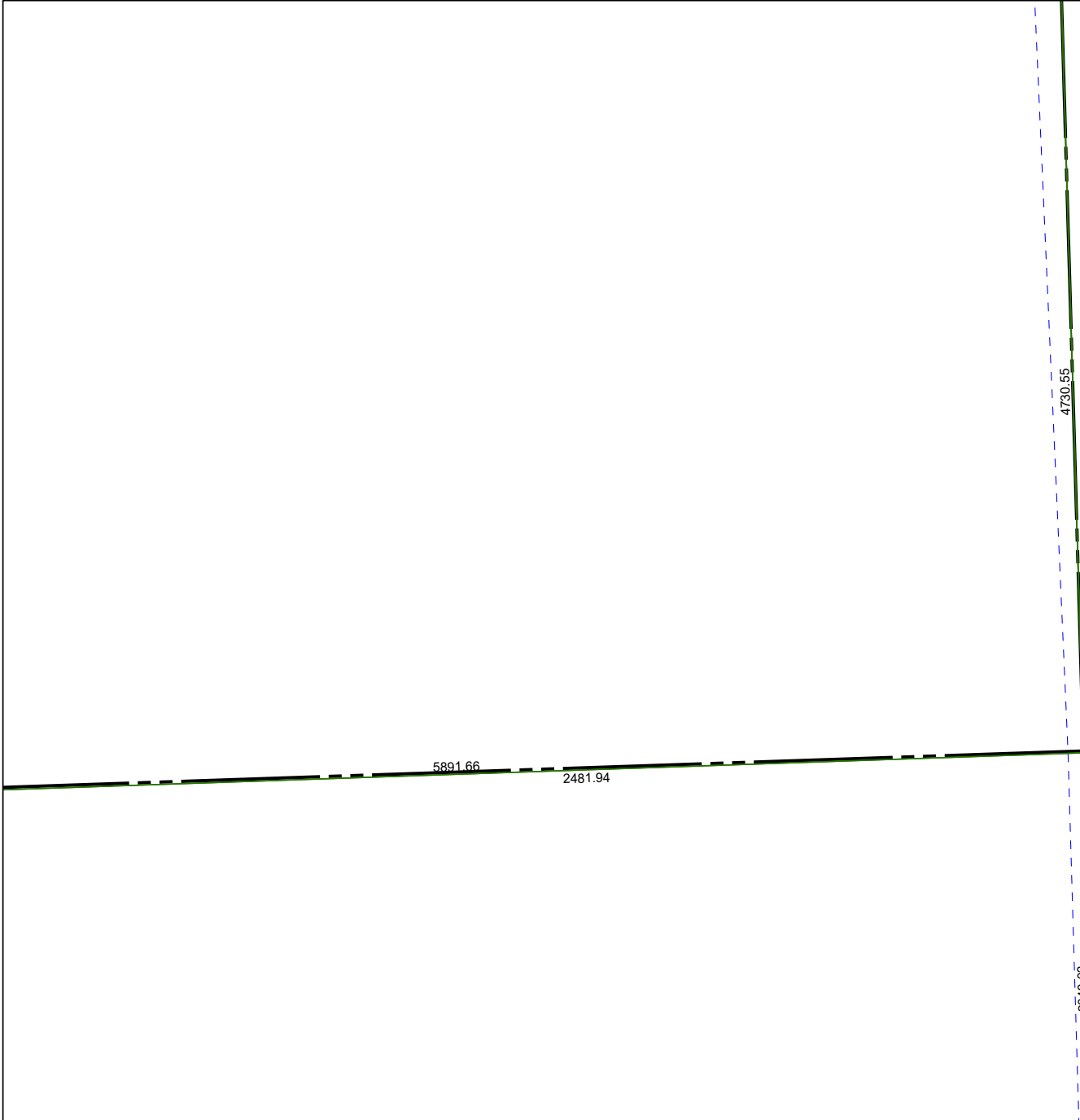


4264A7

4264A10



4264C3

# Harris Central Appraisal District



0 50 100 200 Feet

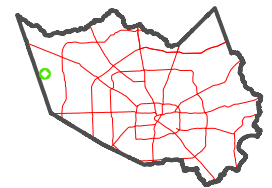
PUBLICATION DATE:  
12/3/2025

Geospatial or map data maintained by the Harris Central Appraisal District is for informational purposes and may **not** have been prepared for or be suitable for legal, engineering, or surveying purposes. It does **not** represent an on-the-ground survey and only represents the approximate location of property boundaries.



4264A12

### MAP LOCATION



## FACET

### 4264A11

5	6	7	8	5
9	10	11	12	9
1	2	3	4	1