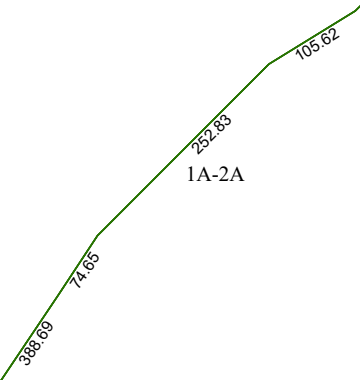


4265D11

1A

6270.57  
9083.01

4264B2



1A-2A

4264B7

# Harris Central Appraisal District



0 45 90 180  
Feet

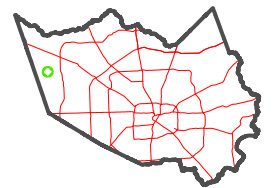
PUBLICATION DATE:  
12/30/2023

Geospatial or map data maintained by the Harris Central Appraisal District is for informational purposes and may **not** have been prepared for or be suitable for legal, engineering, or surveying purposes. It does **not** represent an on-the-ground survey and only represents the approximate location of property boundaries.



4264B4

## MAP LOCATION



# FACET 4264B3

9	10	11	12	9
1	2	3	4	1
5	6	7	8	5