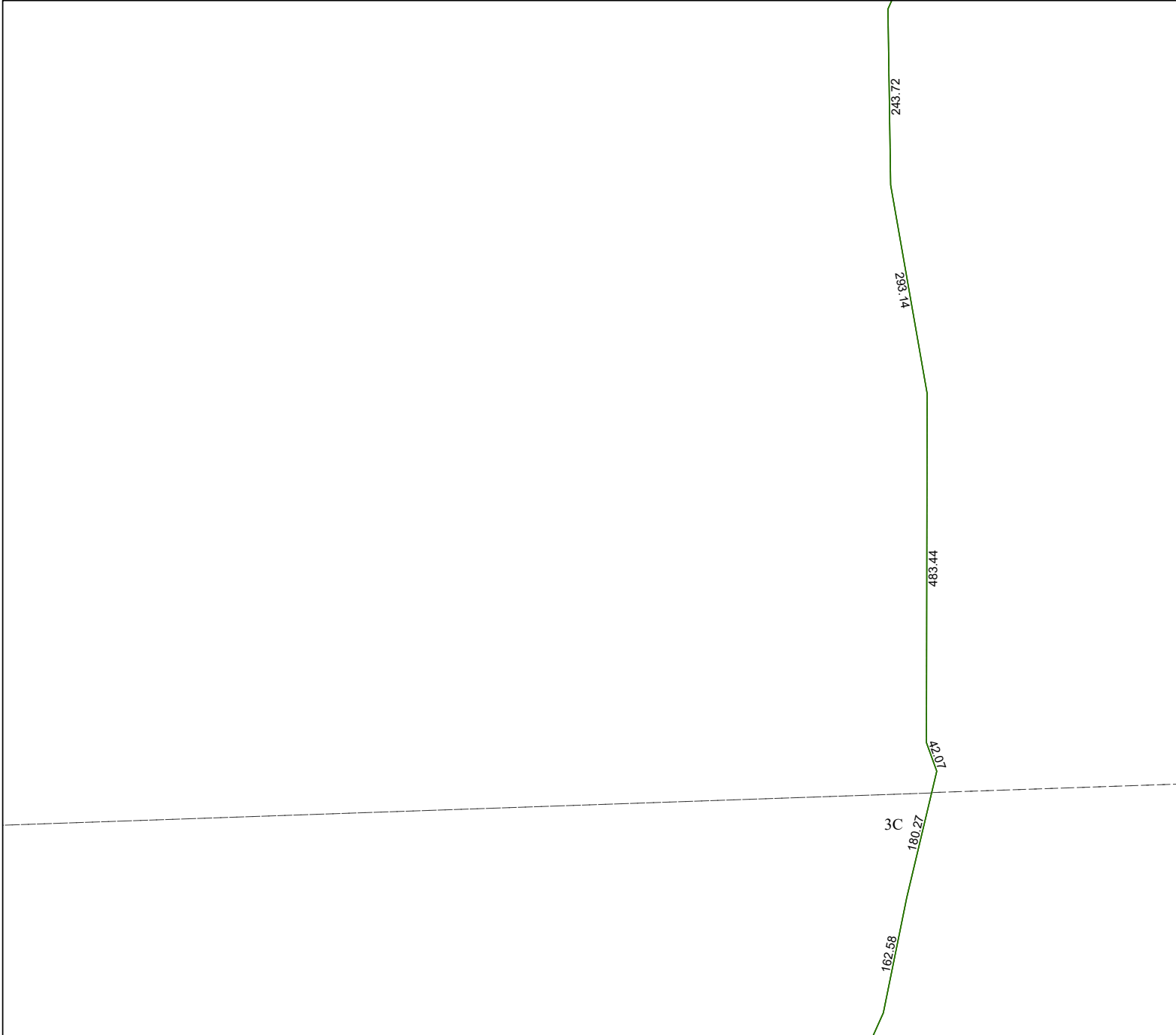


4264D1

4264C8



4264D9

Harris Central Appraisal District



0 45 90 180
 Feet

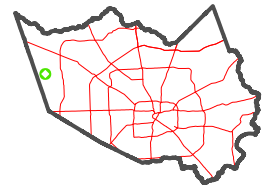
PUBLICATION DATE:
 1/5/2023

Geospatial or map data maintained by the Harris Central Appraisal District is for informational purposes and may not have been prepared for or be suitable for legal, engineering, or surveying purposes. It does not represent an on-the-ground survey and only represents the approximate location of property boundaries.



4264D6

MAP LOCATION



FACET 4264D5

3	4	1	2	3
7	8	5	6	7
11	12	9	10	11