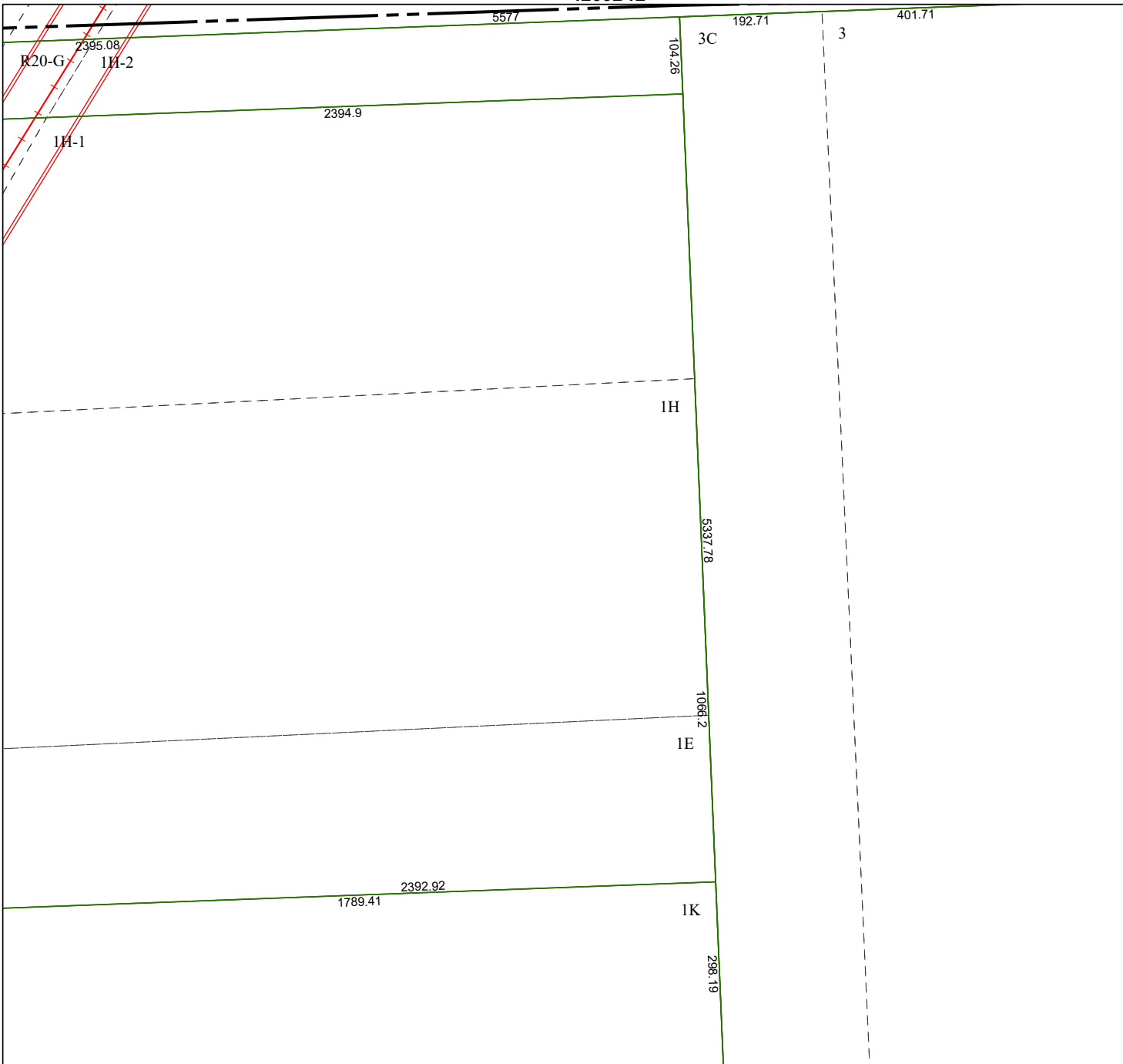


4266B12



1A

# Harris Central Appraisal District



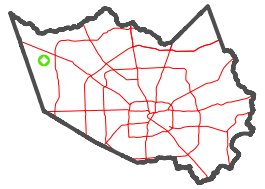
0 45 90 180 Feet

PUBLICATION DATE:  
2/4/2025

Geospatial or map data maintained by the Harris Central Appraisal District is for informational purposes and may **not** have been prepared for or be suitable for legal, engineering, or surveying purposes. It does **not** represent an on-the-ground survey and only represents the approximate location of property boundaries.



### MAP LOCATION



## FACET 4266D4

10	11	12	9	10
2	3	4	1	2
6	7	8	5	6

2381.11  
2363.14  
1914.12  
2A

4266D8

4266D3