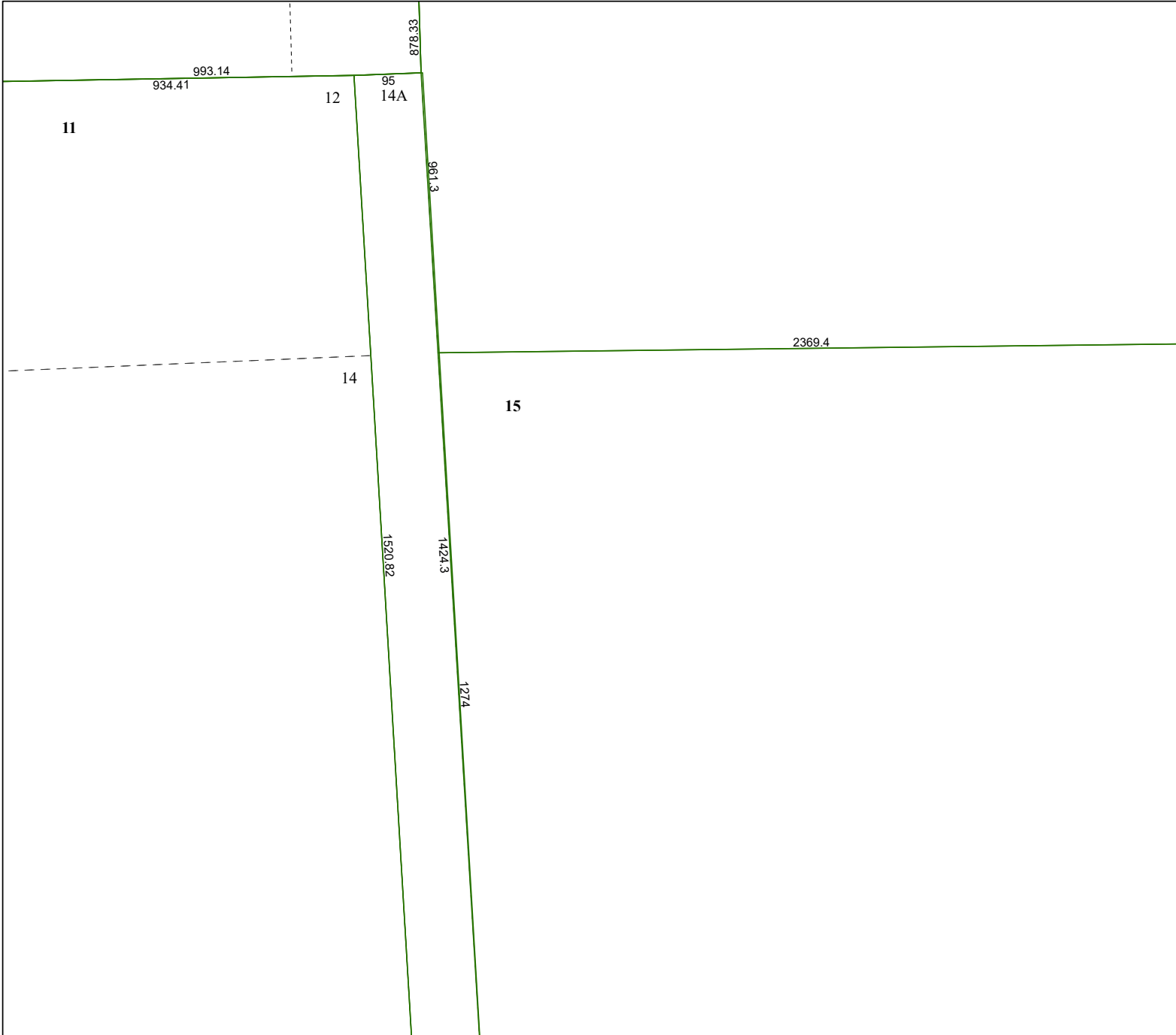


4269C10

4268A1



4268A6

Harris Central Appraisal District



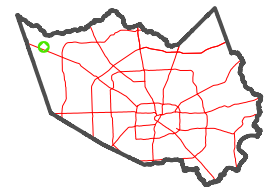
0 45 90 180 Feet

PUBLICATION DATE:
5/21/2024

Geospatial or map data maintained by the Harris Central Appraisal District is for informational purposes and may **not** have been prepared for or be suitable for legal, engineering, or surveying purposes. It does **not** represent an on-the-ground survey and only represents the approximate location of property boundaries.



MAP LOCATION



FACET

4268A2

| | | | | |
|----|---|----|----|----|
| 12 | 9 | 10 | 11 | 12 |
| 4 | 1 | 2 | 3 | 4 |
| 8 | 5 | 6 | 7 | 8 |

4268A3