

4268A2

# Harris Central Appraisal District



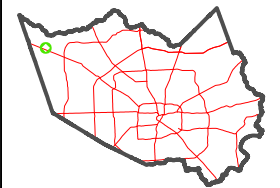
0 45 90 180 Feet

PUBLICATION DATE:  
5/21/2024

Geospatial or map data maintained by the Harris Central Appraisal District is for informational purposes and may **not** have been prepared for or be suitable for legal, engineering, or surveying purposes. It does **not** represent an on-the-ground survey and only represents the approximate location of property boundaries.



MAP LOCATION



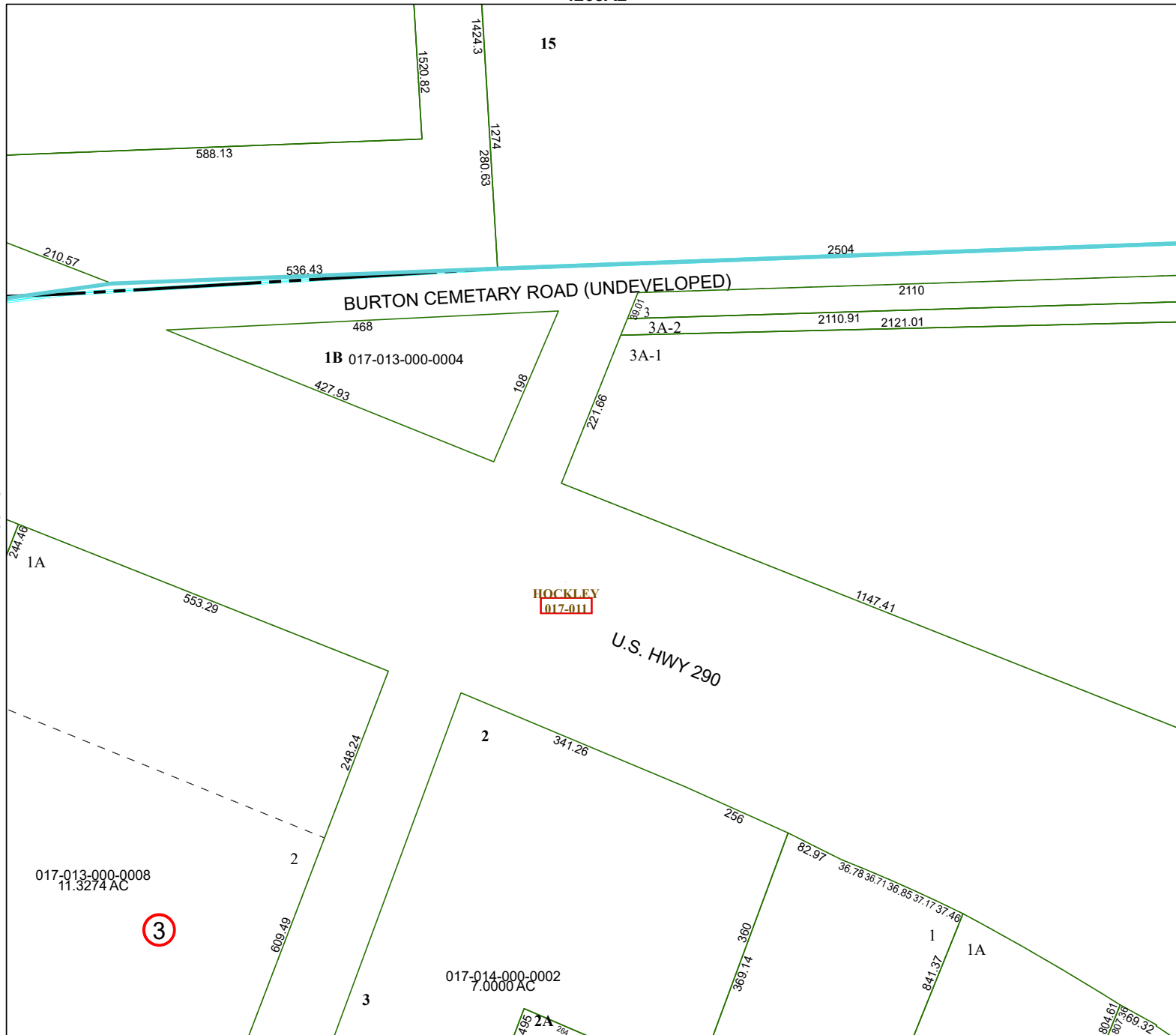
## FACET 4268A6

4	1	2	3	4
8	5	6	7	8
12	9	10	11	12

4268A5

4268A7

4268A10



**HOCKLEY**  
**017-011**

3