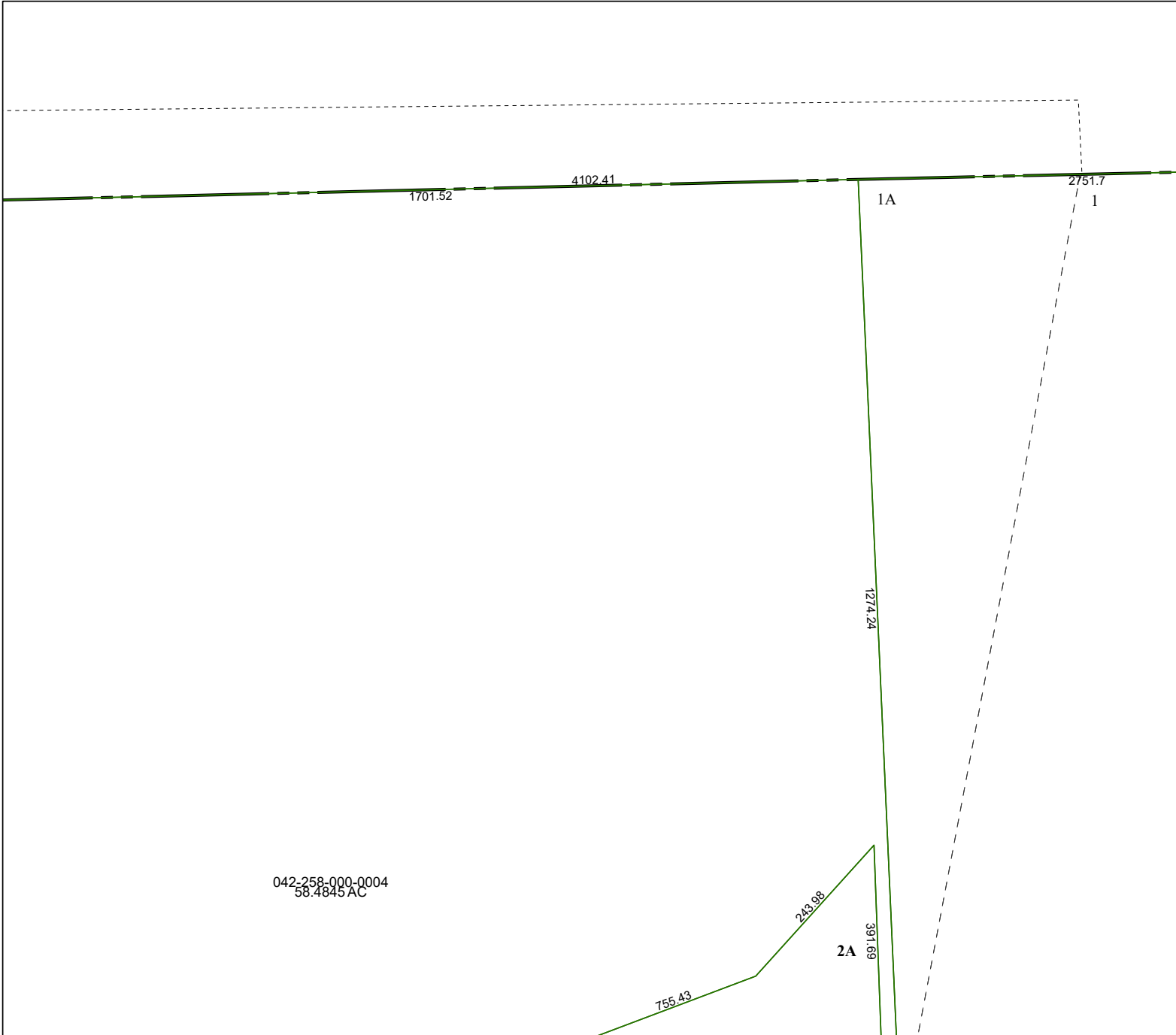


4268A4

4268A7



4268A12

Harris Central Appraisal District



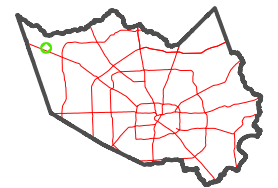
0 45 90 180 Feet

PUBLICATION DATE:
12/30/2023

Geospatial or map data maintained by the Harris Central Appraisal District is for informational purposes and may **not** have been prepared for or be suitable for legal, engineering, or surveying purposes. It does **not** represent an on-the-ground survey and only represents the approximate location of property boundaries.



MAP LOCATION



FACET 4268A8

2	3	4	1	2
6	7	8	5	6
10	11	12	9	10