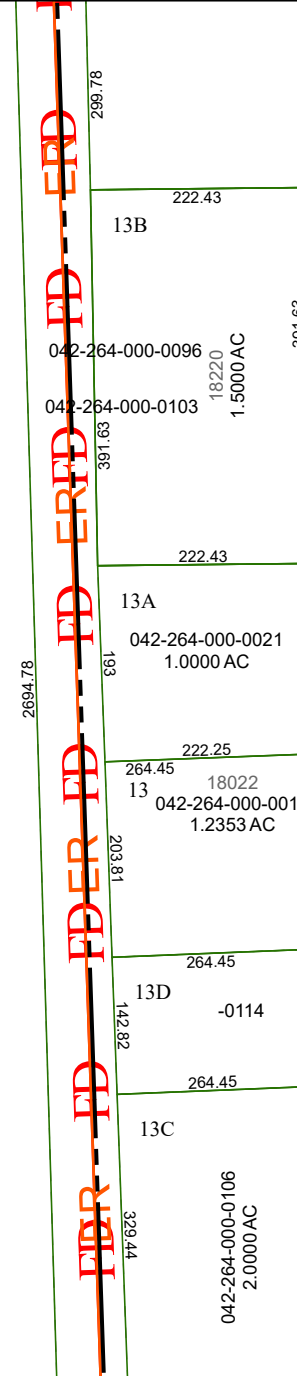
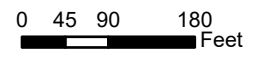


4269D12

4268B3



Harris Central Appraisal District

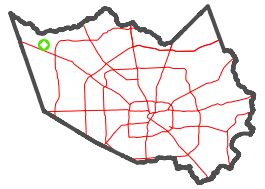


PUBLICATION DATE:
1/5/2023

Geospatial or map data maintained by the Harris Central Appraisal District is for informational purposes and may **not** have been prepared for or be suitable for legal, engineering, or surveying purposes. It does **not** represent an on-the-ground survey and only represents the approximate location of property boundaries.



MAP LOCATION



FACET 4268B4

10	11	12	9	10
2	3	4	1	2
6	7	8	5	6

4268B8