

Harris Central Appraisal District



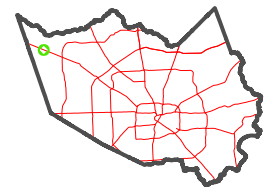
0 45 90 180 Feet

PUBLICATION DATE:
4/22/2024

Geospatial or map data maintained by the Harris Central Appraisal District is for informational purposes and may not have been prepared for or be suitable for legal, engineering, or surveying purposes. It does not represent an on-the-ground survey and only represents the approximate location of property boundaries.



MAP LOCATION

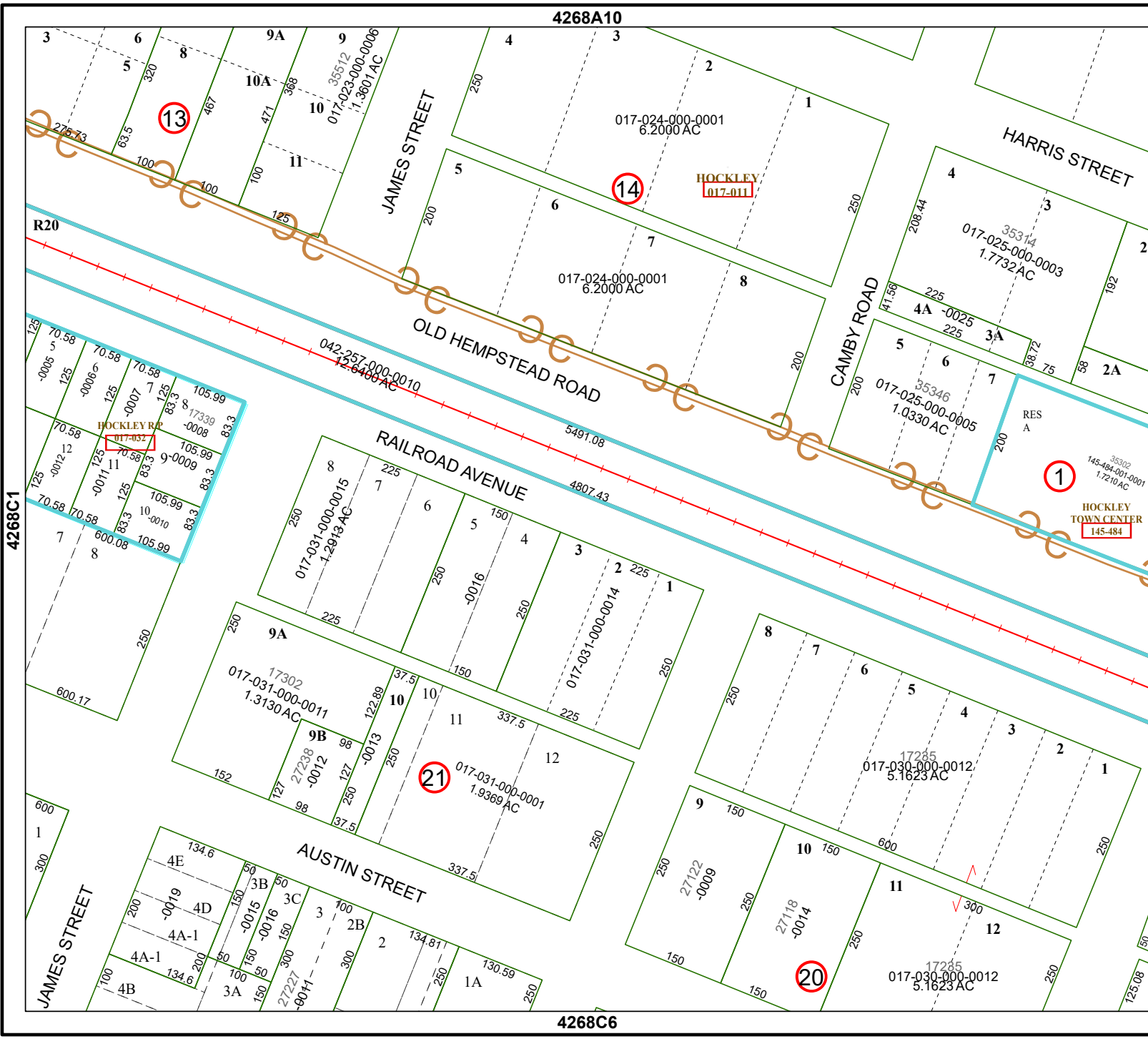


FACET 4268C2

12	9	10	11	12
4	1	2	3	4
8	5	6	7	8

4268A10

4268C6



4268C1

4268C3

Map details including parcel numbers (e.g., 1, 2, 3, 4, 5, 6, 7, 8, 9, 10, 11, 12, 13, 14, 20, 21), acreages (e.g., 6.2000 AC, 1.7732 AC, 1.9369 AC, 5.1623 AC), and street names (James Street, Harris Street, Old Hempstead Road, Railroad Avenue, Austin Street, Camby Road). Parcel boundaries are shown in green, and major roads are shown in blue and orange.