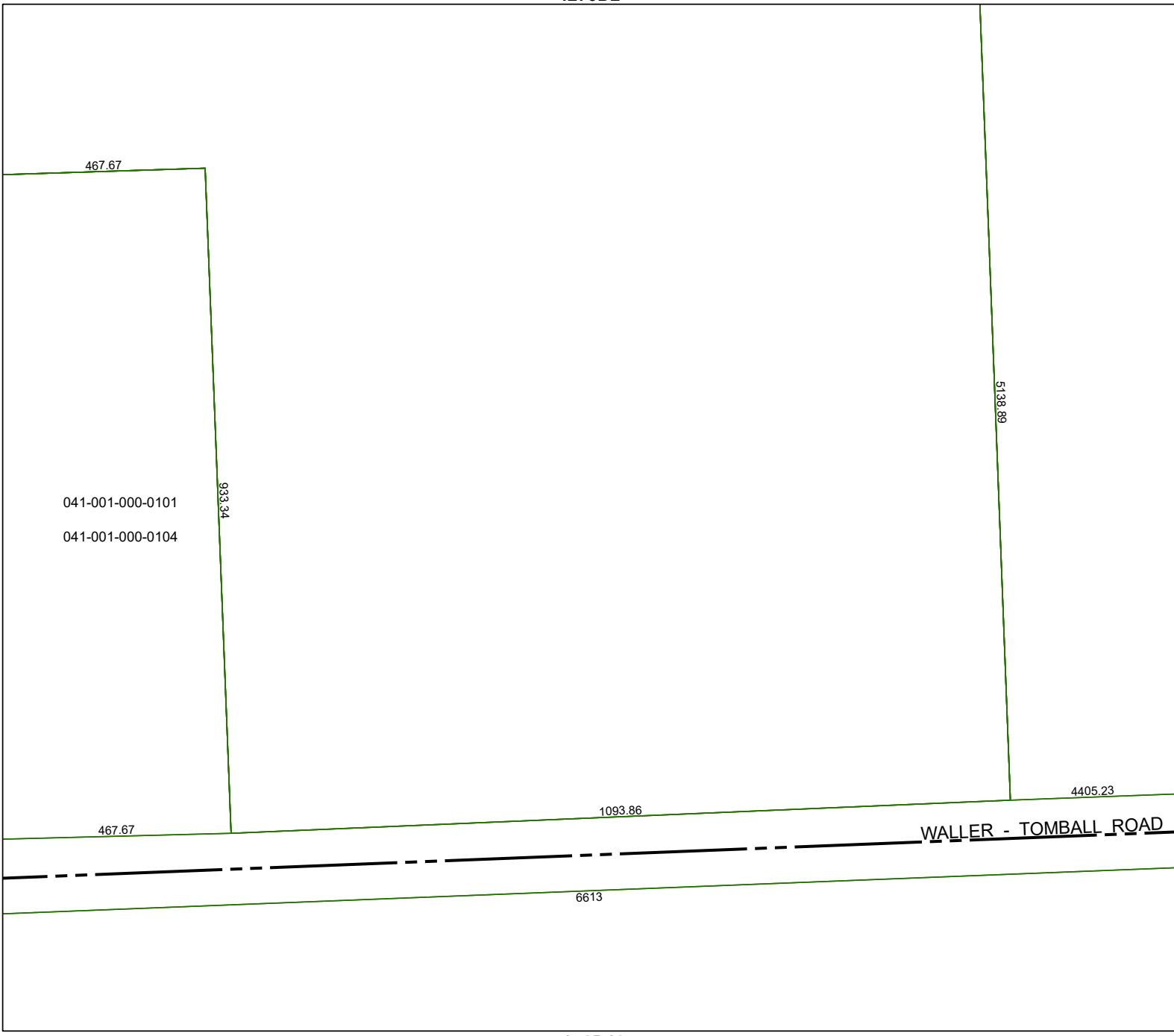


4270D2

4270D5



4270D10

# Harris Central Appraisal District



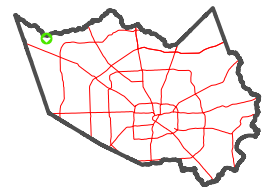
0 45 90 180  
Feet

PUBLICATION DATE:  
1/5/2023

Geospatial or map data maintained by the Harris Central Appraisal District is for informational purposes and may **not** have been prepared for or be suitable for legal, engineering, or surveying purposes. It does **not** represent an on-the-ground survey and only represents the approximate location of property boundaries.



### MAP LOCATION



## FACET 4270D6

4	1	2	3	4
8	5	6	7	8
12	9	10	11	12

4270D7