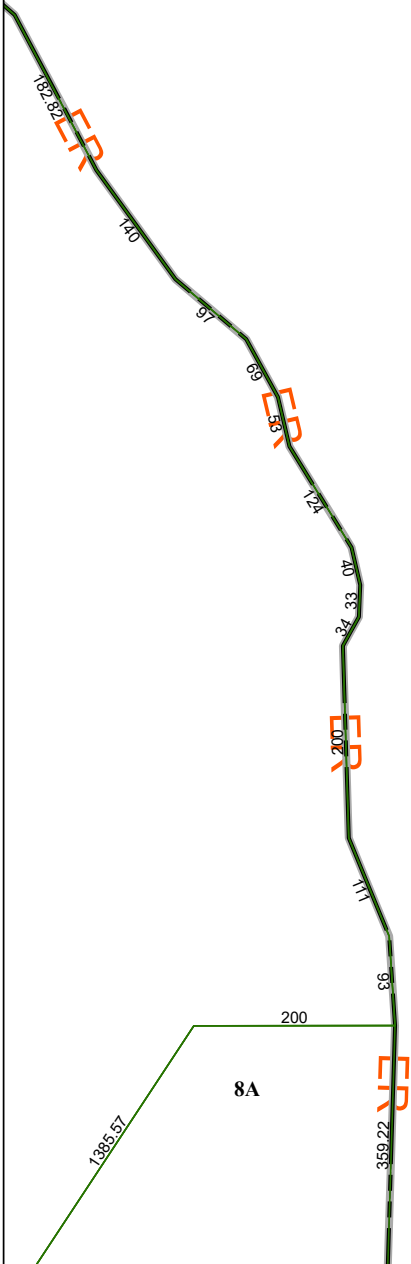


4271C3

4271C6



4271C11

Harris Central Appraisal District



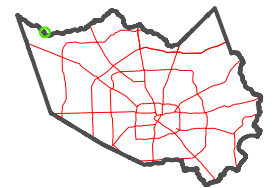
0 45 90 180
Feet

PUBLICATION DATE:
1/5/2023

Geospatial or map data maintained by the Harris Central Appraisal District is for informational purposes and may **not** have been prepared for or be suitable for legal, engineering, or surveying purposes. It does **not** represent an on-the-ground survey and only represents the approximate location of property boundaries.



MAP LOCATION



FACET 4271C7

1	2	3	4
5	6	7	8
9	10	11	12

4271C8