

# Harris Central Appraisal District

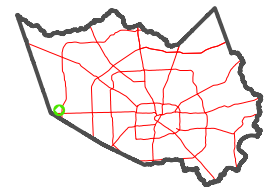


0 45 90 180 Feet

PUBLICATION DATE:  
1/5/2023

Geospatial or map data maintained by the Harris Central Appraisal District is for informational purposes and may not have been prepared for or be suitable for legal, engineering, or surveying purposes. It does not represent an on-the-ground survey and only represents the approximate location of property boundaries.

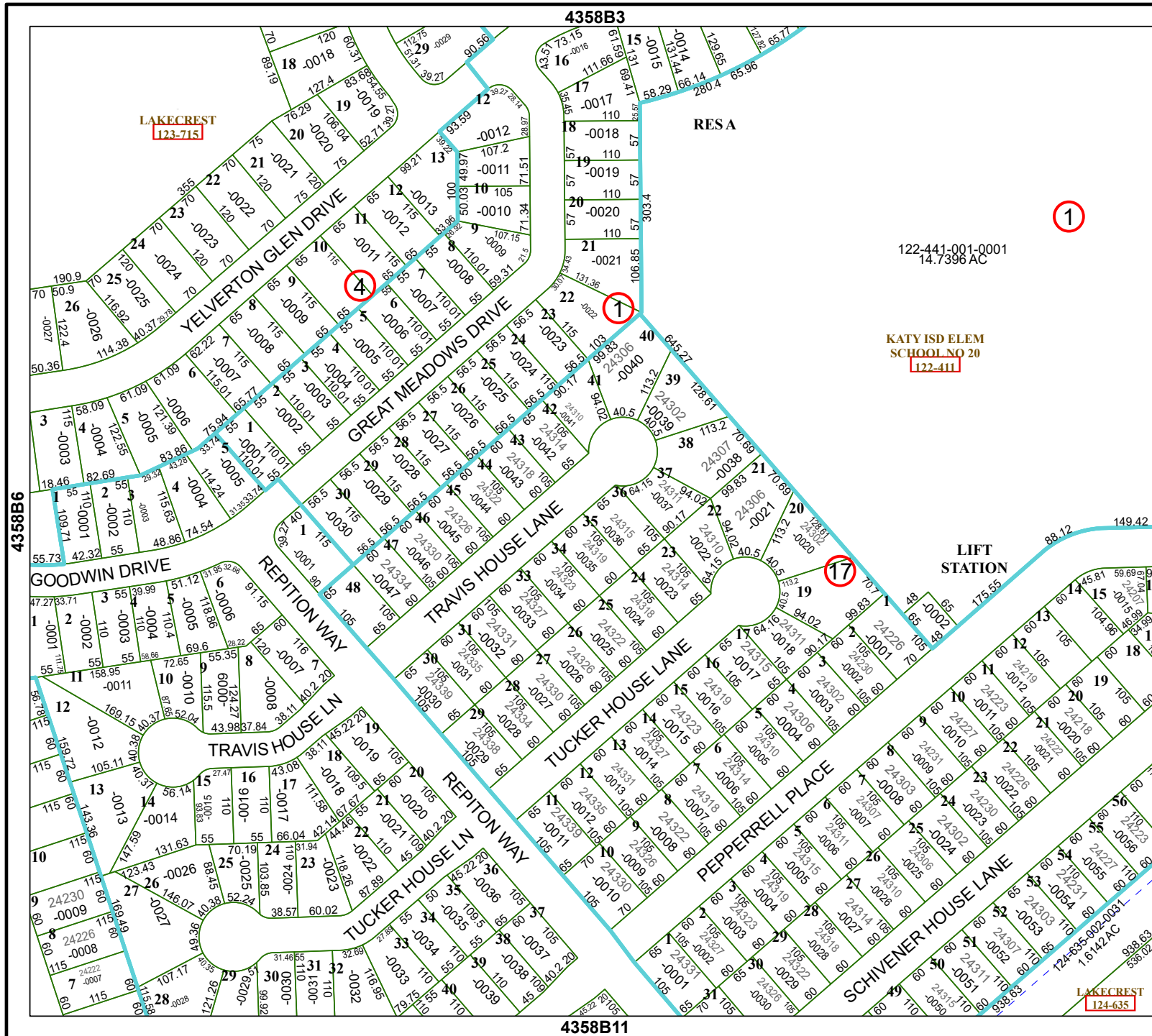
MAP LOCATION



## FACET

### 4358B7

1	2	3	4	1
5	6	7	8	5
9	10	11	12	9



1

122-441-001-0001  
14.7396 AC

KATY ISD ELEM  
SCHOOL NO 20  
122-411

17

LAKECREST  
124-635

4358B3

4358B11