

# Harris Central Appraisal District



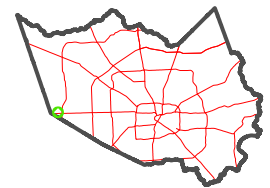
0 45 90 180 Feet

PUBLICATION DATE:  
2/13/2023

Geospatial or map data maintained by the Harris Central Appraisal District is for informational purposes and may not have been prepared for or be suitable for legal, engineering, or surveying purposes. It does not represent an on-the-ground survey and only represents the approximate location of property boundaries.



MAP LOCATION

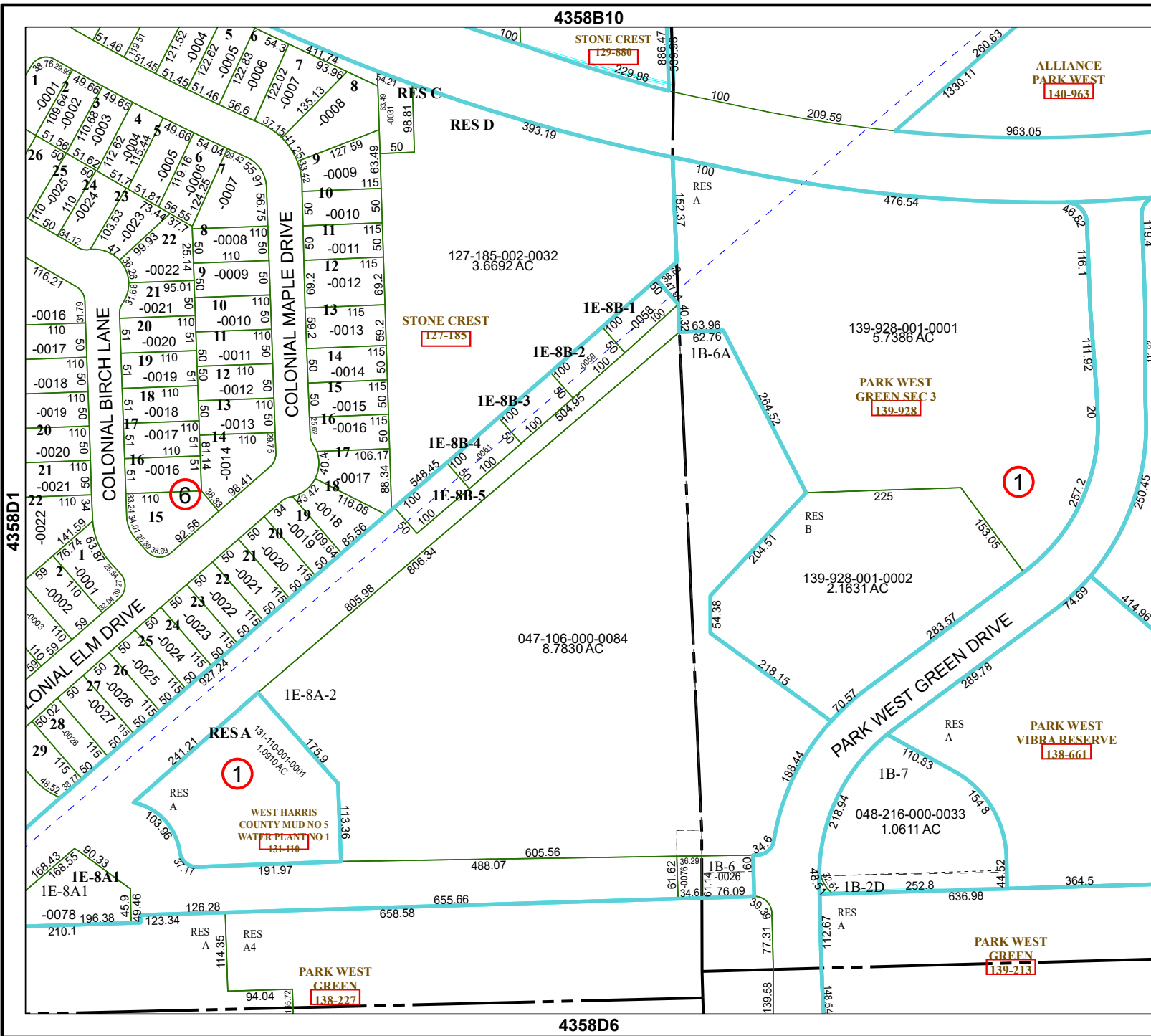


## FACET 4358D2

12	9	10	11	12
4	1	2	3	4
8	5	6	7	8

4358B10

4358D6



4358D1

4358D3

STONE CREST  
129-880

ALLIANCE  
PARK WEST  
140-963

STONE CREST  
127-185

PARK WEST  
GREEN SEC 3  
139-928

WEST HARRIS  
COUNTY MUD NO 5  
WATER PLANT NO 1  
131-110

PARK WEST  
VIBRA RESERVE  
138-661

PARK WEST  
GREEN  
138-227

PARK WEST  
GREEN  
139-213