

Harris Central Appraisal District

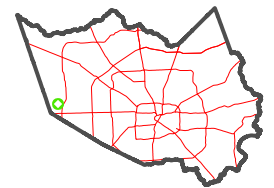


0 45 90 180 Feet

PUBLICATION DATE:
3/11/2024

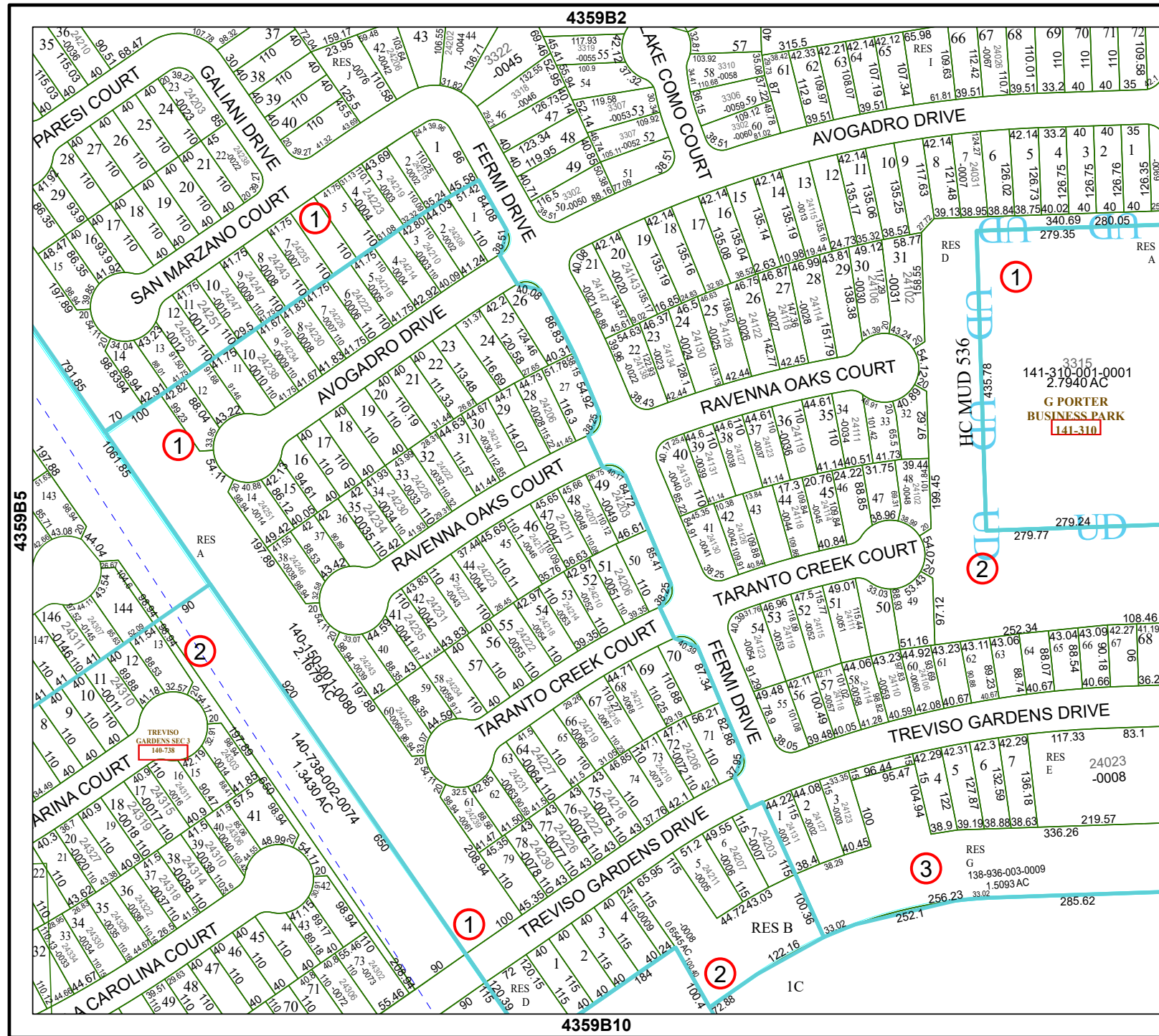
Geospatial or map data maintained by the Harris Central Appraisal District is for informational purposes and may not have been prepared for or be suitable for legal, engineering, or surveying purposes. It does not represent an on-the-ground survey and only represents the approximate location of property boundaries.

MAP LOCATION



FACET 4359B6

4	1	2	3	4
8	5	6	7	8
12	9	10	11	12



141-310-001-0001
2.7940 AC
G PORTER BUSINESS PARK
L41-310

TREVISIO GARDENS SEC 1
140-738

4359B2

4359B10

4359B5

4359B7