

# Harris Central Appraisal District



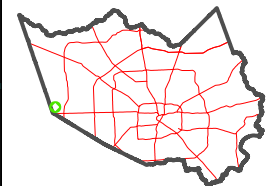
0 45 90 180 Feet

PUBLICATION DATE:  
5/6/2024

Geospatial or map data maintained by the Harris Central Appraisal District is for informational purposes and may not have been prepared for or be suitable for legal, engineering, or surveying purposes. It does not represent an on-the-ground survey and only represents the approximate location of property boundaries.



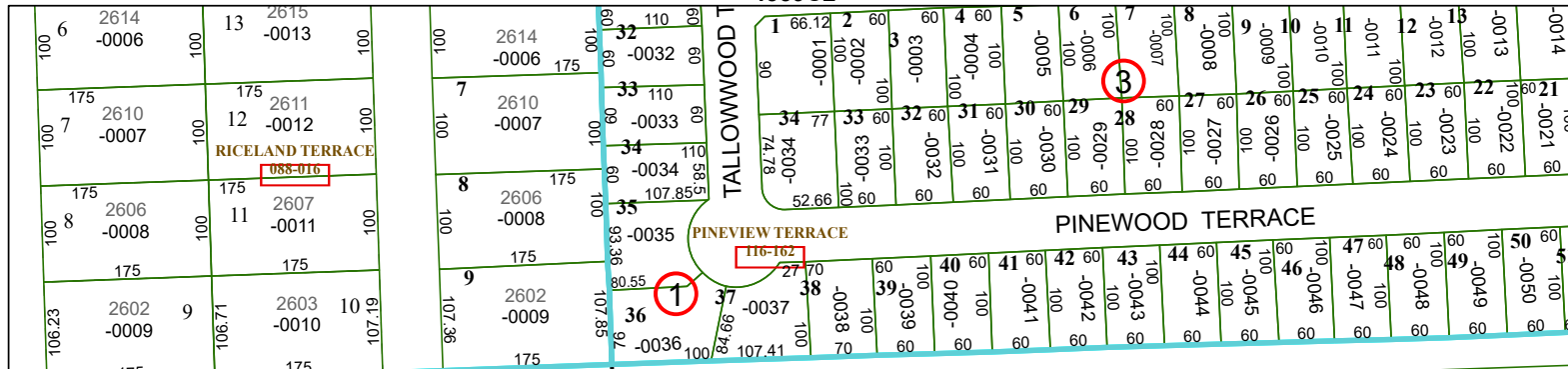
## MAP LOCATION



## FACET 4359C6

4	1	2	3	4
8	5	6	7	8
12	9	10	11	12

4359C2



2185.55

2503  
047-139-000-0003  
15.2116 AC

2185.56

2063

2499  
047-139-000-0009  
15.4220 AC

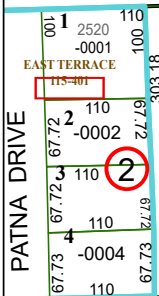
2063  
2493.35

TOWN  
PARK  
113-902

113-902-006-0026  
34.3900 AC

4359C10

4359C5



3B

3C

4359C7