

4359B10

4359D6

4359D1

Harris Central Appraisal District

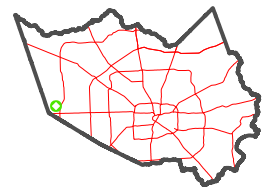


0 45 90 180 Feet

PUBLICATION DATE: 1/5/2023

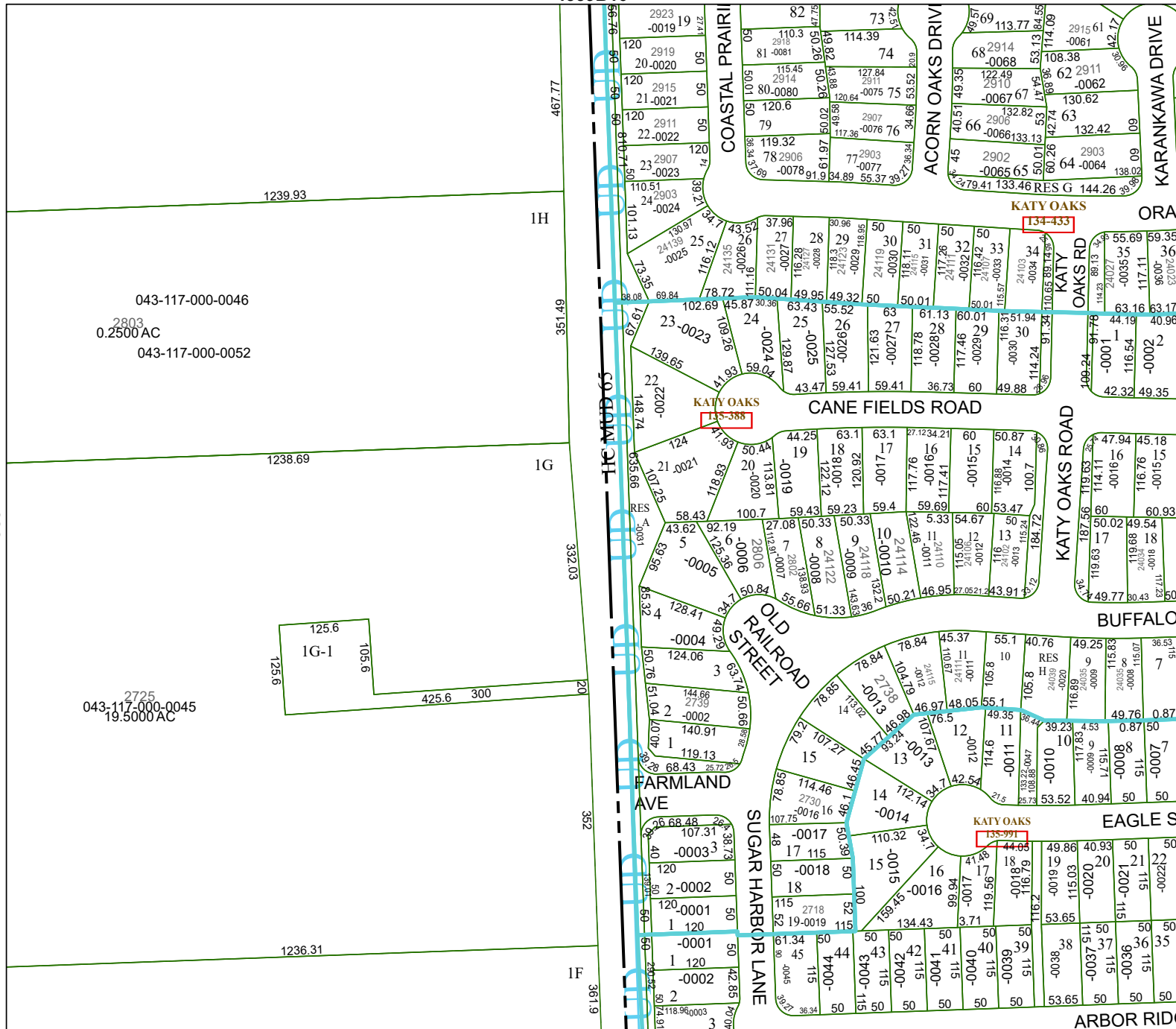
Geospatial or map data maintained by the Harris Central Appraisal District is for informational purposes and may not be used for legal, engineering, or surveying purposes. It does not represent an on-the-ground survey and only represents the approximate location of property boundaries.

MAP LOCATION



FACET 4359D2

12	9	10	11	12
4	1	2	3	4
8	5	6	7	8



043-117-000-0046
2803
0.2500 AC
043-117-000-0052

2725
043-117-000-0045
19.5000 AC

125.6
105.6
125.6
IG-1